

**Appendix B12**  
IW Foul Sewer Asset  
Alterations





# BUSCONNECTS DUBLIN CORE BUS CORRIDORS INFRASTRUCTURE WORKS

## KIMMAGE TO CITY CENTRE CORE BUS CORRIDOR SCHEME

### IW FOUL SEWER ASSET ALTERATIONS. RECORDS & PROPOSED WORKS

#### DRAWING SERIES NUMBER(S)

BCIDD-ROT-UTL\_IX-0011\_XX\_00-DR-CU-0002

BCIDD-ROT-UTL\_KP-0011\_XX\_00-DR-CU-0002

BCIDD-ROT-UTL\_UD-0011\_XX\_00-DR-CU-0001 to 0014

#### DRAWING SERIES DESCRIPTION

KIMMAGE TO CITY CENTRE CORE BUS CORRIDOR SCHEME. IW FOUL SEWER ASSET ALTERATIONS. COVER SHEET

KIMMAGE TO CITY CENTRE CORE BUS CORRIDOR SCHEME. IW FOUL SEWER ASSET ALTERATIONS. KEY PLAN

KIMMAGE TO CITY CENTRE CORE BUS CORRIDOR SCHEME. IW FOUL SEWER ASSET ALTERATIONS. DRAWINGS.

\\wddubp1u20191917117117-02\_WIP08 MODELS01 CAD01 DWG03 STG 3 - STATUTORY PROCESS (M)01 PLANNING11 KIMMAGECOVER SHEETSBCIDD-ROT-UTL\_IX-0011\_XX\_00-DR-CU-0002.dwg

**Disclaimer**  
 a. © National Transport Authority (NTA) 2022. This drawing is confidential and the copyright in it is owned by NTA. This drawing must not be either loaned, copied or otherwise reproduced in whole or in part or used for any purpose without the prior permission of NTA.  
 b. This drawing is to be used for the design element identified in the titleblock. Other information shown is to be considered indicative only. The drawing is to be read in conjunction with all other relevant design drawings.  
 c. O.S. data used for plans are printed under © Ordnance Survey Ireland Government of Ireland. All rights reserved. Licence Number 2022/OSI\_NMA\_180 National Transport Authority. All elevations are in metres and relate to OSI Geoid Model (OSGM15) Mean Head. All Co-ordinates are in Irish Transverse Mercator Grid (ITM) as defined by OSI active local GPS station.  
 d. Information concerning the position of apparatus shown on this drawing is based on drawings supplied by the utility owners and/or the utility works contractor, whilst every care has been taken in the preparation of this drawing, positions should be taken as approximate and are intended for general guidance only and no representation is made by the NTA as to the accuracy, completeness, sufficiency or otherwise of this drawing and the position of the apparatus. The information contained herein does not purport to be comprehensive or final as the apparatus is subject to being altered and/or superceded. Recipients should not rely on this information. Any liabilities are hereby expressly disclaimed.  
 e. The information contained herein has been provided by the NTA but does not purport to be comprehensive or final. Recipients should not rely on the information. Neither the NTA nor any of its directors, officers, employees, agents, stakeholders or advisers make any representation or warranty as to, or accept any liability or responsibility in relation to, the adequacy, accuracy, reasonableness or completeness of the information provided as part of this document or any matter on which the information is based (including but not limited to loss or damage arising as a result of reliance by recipients on the information or any part of it). Any liabilities are hereby expressly disclaimed.

**Project Ireland 2040**  
 Building Ireland's Future

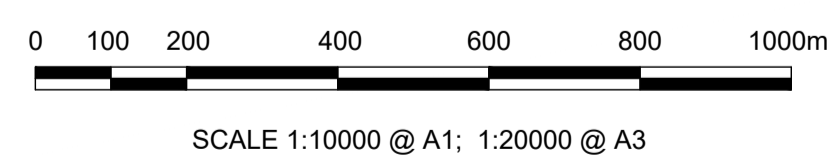
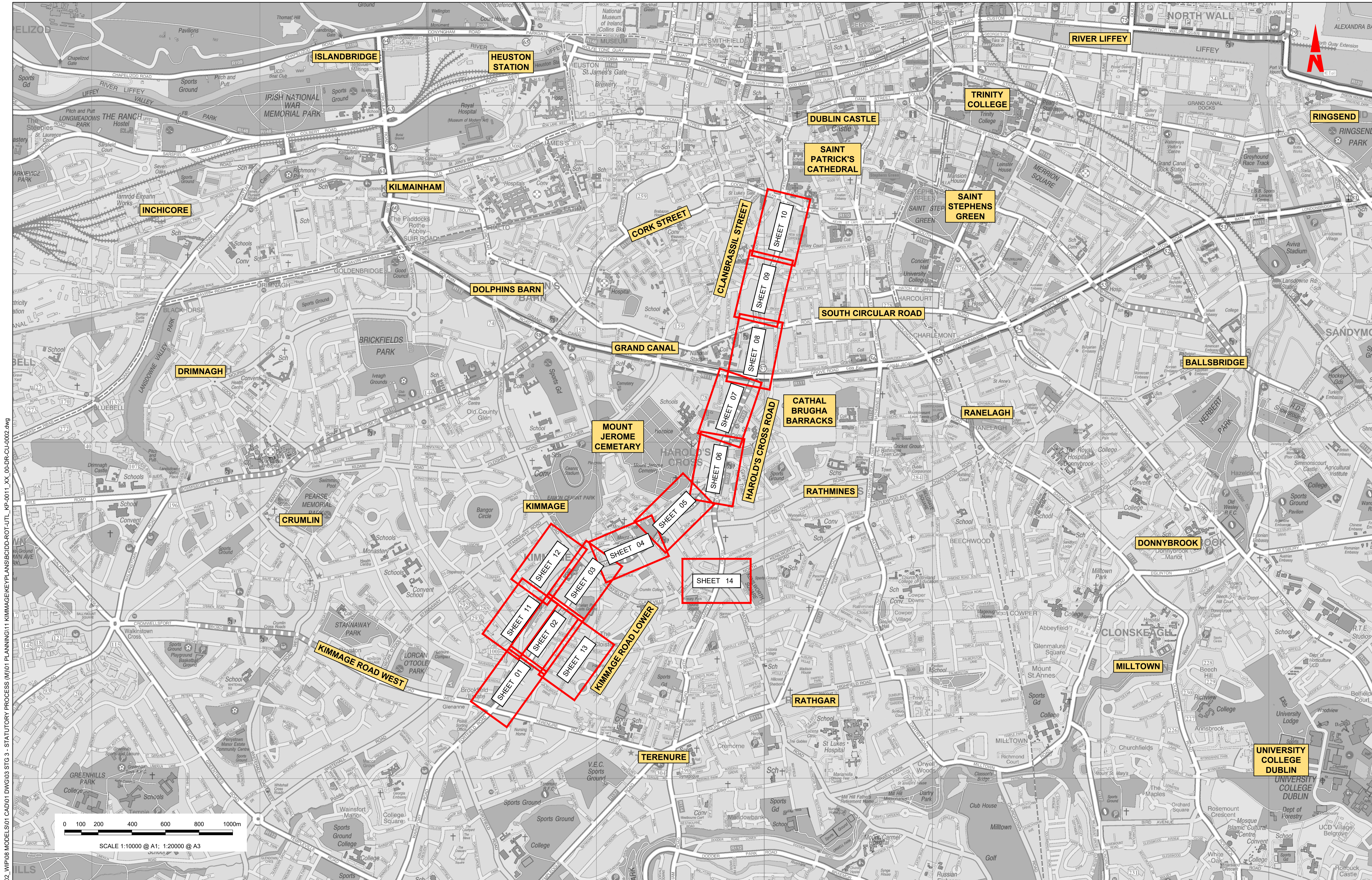
Rev	Date	Dwn	Chk'd	App'd	Description
M01	FEB 2023	CG	SMG	SMG	ISSUE FOR PHASE 4: PLANNING

Client <b>NTA</b> Údarás Náisiúnta Iompair National Transport Authority		Engineering Designer <b>ROD</b> RUGHAN & O'DONOVAN TYP SA		
Date FEB 2023	Scale NTS @ A1 NTS @ A3	Drawn CG	Checked SMG	Approved SMG
Programme Code BCIDD	Originator Code ROT	QMS Code		

Programme Title <b>BUSCONNECTS DUBLIN CORE BUS CORRIDORS INFRASTRUCTURE WORKS</b>			
Drawing Title KIMMAGE TO CITY CENTRE CORE BUS CORRIDOR SCHEME IW FOUL SEWER ASSET ALTERATIONS COVER SHEET			
Drawing File Name BCIDD-ROT-UTL_IX-0011_XX_00-DR-CU-0002	Sheet Number 02 of 0	Status A	Rev M01

DO NOT SCALE USE FIGURED DIMENSIONS ONLY



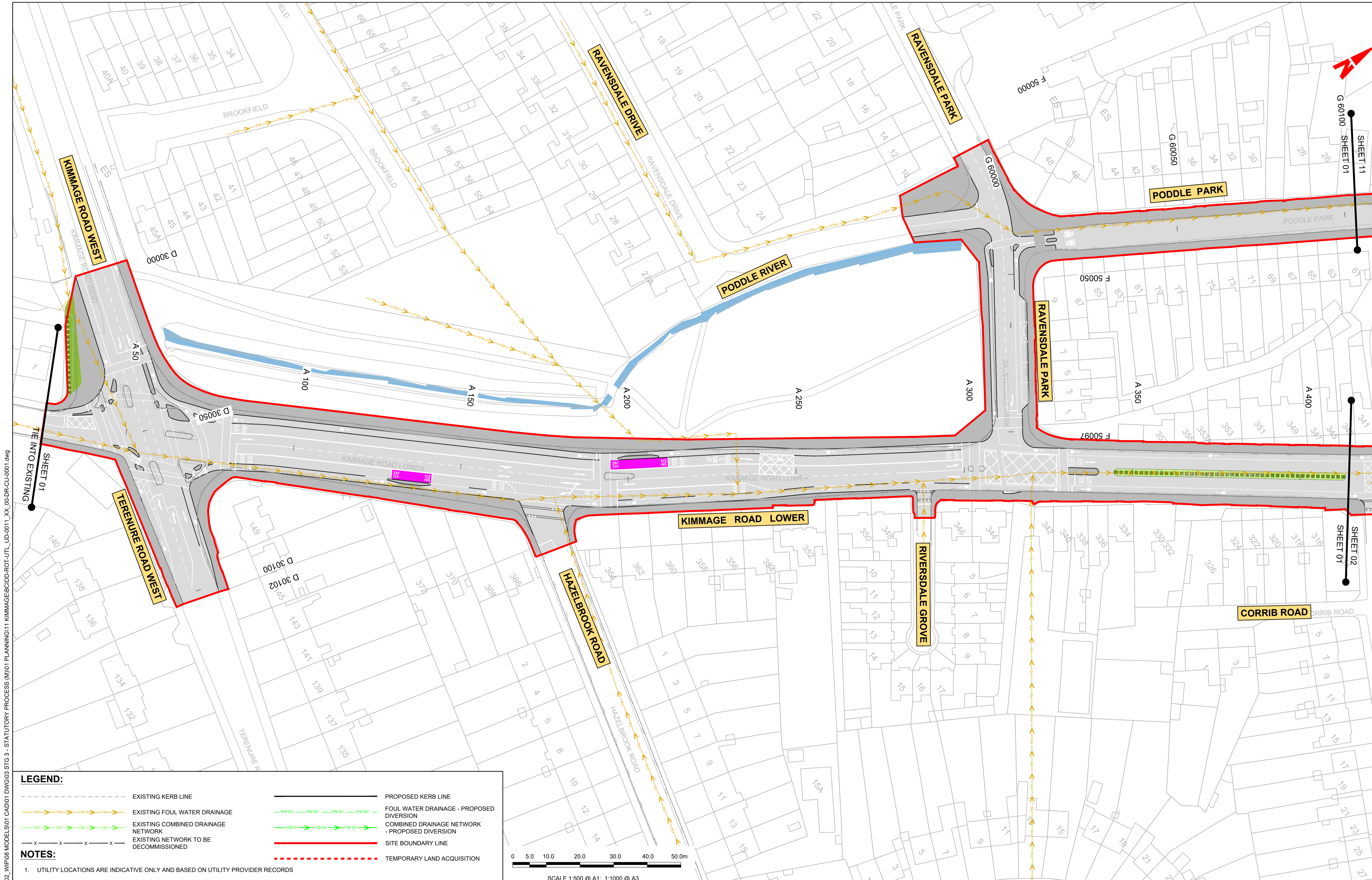


\\p01\p01\19117-02\_WIPO8 MODELS\01\_CAD\01\_PLANNING\11\_KIMMAGE\KEYPLANS\BCIDD-ROT-UTL\_KP-0011\_XX\_00-DR-CU-0002.dwg

<p><b>Disclaimer</b></p> <p>a. © National Transport Authority (NTA) 2022. This drawing is confidential and the copyright in it is owned by NTA. This drawing must not be either loaned, copied or otherwise reproduced in whole or in part or used for any purpose without the prior permission of NTA.</p> <p>b. This drawing is to be used for the design element identified in the titleblock. Other information shown is to be considered indicative only. The drawing is to be read in conjunction with all other relevant design drawings.</p> <p>c. O.S. data used for plans are printed under © Ordnance Survey Ireland Government of Ireland. All rights reserved. Licence Number 2022/OSI_NMA_180 National Transport Authority. All elevations are in metres and relate to OSI Geoid Model (OSGM15) Mean Head. All Co-ordinates are in Irish Transverse Mercator Grid (ITM) as defined by OSI active local GPS station.</p> <p>d. Information concerning the position of apparatus shown on this drawing is based on drawings supplied by the utility owners and/or the utility works contractor, whilst every care has been taken in the preparation of this drawing, positions should be as to, or accept any liability or responsibility in relation to, the adequacy, accuracy, reasonableness or completeness of the information provided as part of this document or any matter on which the information is based (including but not limited to loss or damage arising as a result of reliance by recipients on the information or any part of it). Any liabilities are hereby expressly disclaimed.</p>		<p>Rev M01 Date FEB 2023 Dm CG Chk'd SMG App'd SMG Description ISSUE FOR PHASE 4 : PLANNING</p>		<p>Client <b>NTA</b> Údaráis Náisiúnta Iompair National Transport Authority</p>		<p>Engineering Designer <b>CIROD</b> TYPSA</p>			<p>Programme Title <b>BUSCONNECTS DUBLIN</b> <b>CORE BUS CORRIDORS INFRASTRUCTURE WORKS</b></p>				
<p>Date FEB 2023 Scale 1:10,000 @ A1 1:20,000 @ A3</p>		<p>Drawn CG</p>		<p>Checked SMG</p>		<p>Approved SMG</p>		<p>Drawing Title <b>KIMMAGE TO CITY CENTRE CORE BUS CORRIDOR SCHEME</b> <b>IW FOUL SEWER ASSET ALTERATIONS</b> <b>KEYPLAN</b></p>					
<p>Programme Code BCIDD</p>		<p>Originator Code ROT</p>		<p>QMS Code</p>		<p>Drawing File Name BCIDD-ROT-UTL_KP-0011_XX_00-DR-CU-0002</p>		<p>Sheet Number 02 of 00</p>		<p>Status A</p>		<p>Rev M01</p>	

DO NOT SCALE USE FIGURED DIMENSIONS ONLY



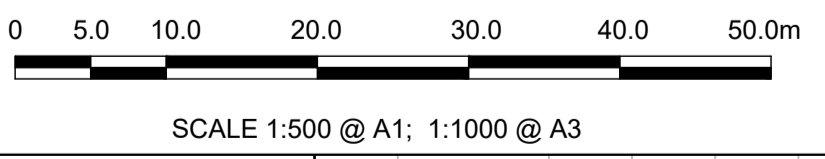


**LEGEND:**

- EXISTING KERB LINE
- PROPOSED KERB LINE
- EXISTING FOUL WATER DRAINAGE
- FOUL WATER DRAINAGE - PROPOSED DIVERSION
- EXISTING COMBINED DRAINAGE NETWORK
- COMBINED DRAINAGE NETWORK - PROPOSED DIVERSION
- EXISTING NETWORK TO BE DECOMMISSIONED
- SITE BOUNDARY LINE
- TEMPORARY LAND ACQUISITION

**NOTES:**

- UTILITY LOCATIONS ARE INDICATIVE ONLY AND BASED ON UTILITY PROVIDER RECORDS



**Disclaimer**

a. © National Transport Authority (NTA) 2022. This drawing is confidential and the copyright in it is owned by NTA. This drawing must not be either loaned, copied or otherwise reproduced in whole or in part or used for any purpose without the prior permission of NTA.

b. This drawing is to be used for the design element identified in the titlebox. Other information shown is to be considered indicative only. The drawing is to be read in conjunction with all other relevant design drawings.

c. O.S. data used for plans are printed under © Ordnance Survey Ireland Government of Ireland. All rights reserved. Licence Number 2022/OSI\_NMA\_180 National Transport Authority. All elevations are in metres and relate to OSI Geoid Model (OSGM15) Mean Head. All Co-ordinates are in Irish Transverse Mercator Grid (ITM) as defined by OSI active local GPS station.

d. Information concerning the position of apparatus shown on this drawing is based on drawings supplied by the utility owners and/or the utility works contractor, whilst every care has been taken in the preparation of this drawing, positions should be taken as approximate and are intended for general guidance only and no representation is made by the NTA as to the accuracy, completeness, sufficiency or otherwise of this drawing and the position of the apparatus. The information contained herein does not purport to be comprehensive or final as the apparatus is subject to being altered and/or superceded. Recipients should not rely on this information. Any liabilities are hereby expressly disclaimed.

e. The information contained herein has been provided by the NTA but does not purport to be comprehensive or final. Recipients should not rely on the information. Neither the NTA nor any of its directors, officers, employees, agents, stakeholders or advisers make any representation or warranty as to, or accept any liability or responsibility in relation to, the adequacy, accuracy, reasonableness or completeness of the information provided as part of this document or any matter on which the information is based (including but not limited to loss or damage arising as a result of reliance by recipients on the information or any part of it). Any liabilities are hereby expressly disclaimed.



Rev	Date	Drm	Chk'd	App'd	Description
M01	FEB 2023	DS	LS	SMG	ISSUED FOR PHASE 4: PLANNING

Client: **NTA**  
Údarás Náisiúnta Iompair  
National Transport Authority

Date: FEB 2023  
Scale: 1:500 @ A1  
1:1000 @ A3

Engineering Designer: **CIROD**  
TYPSA

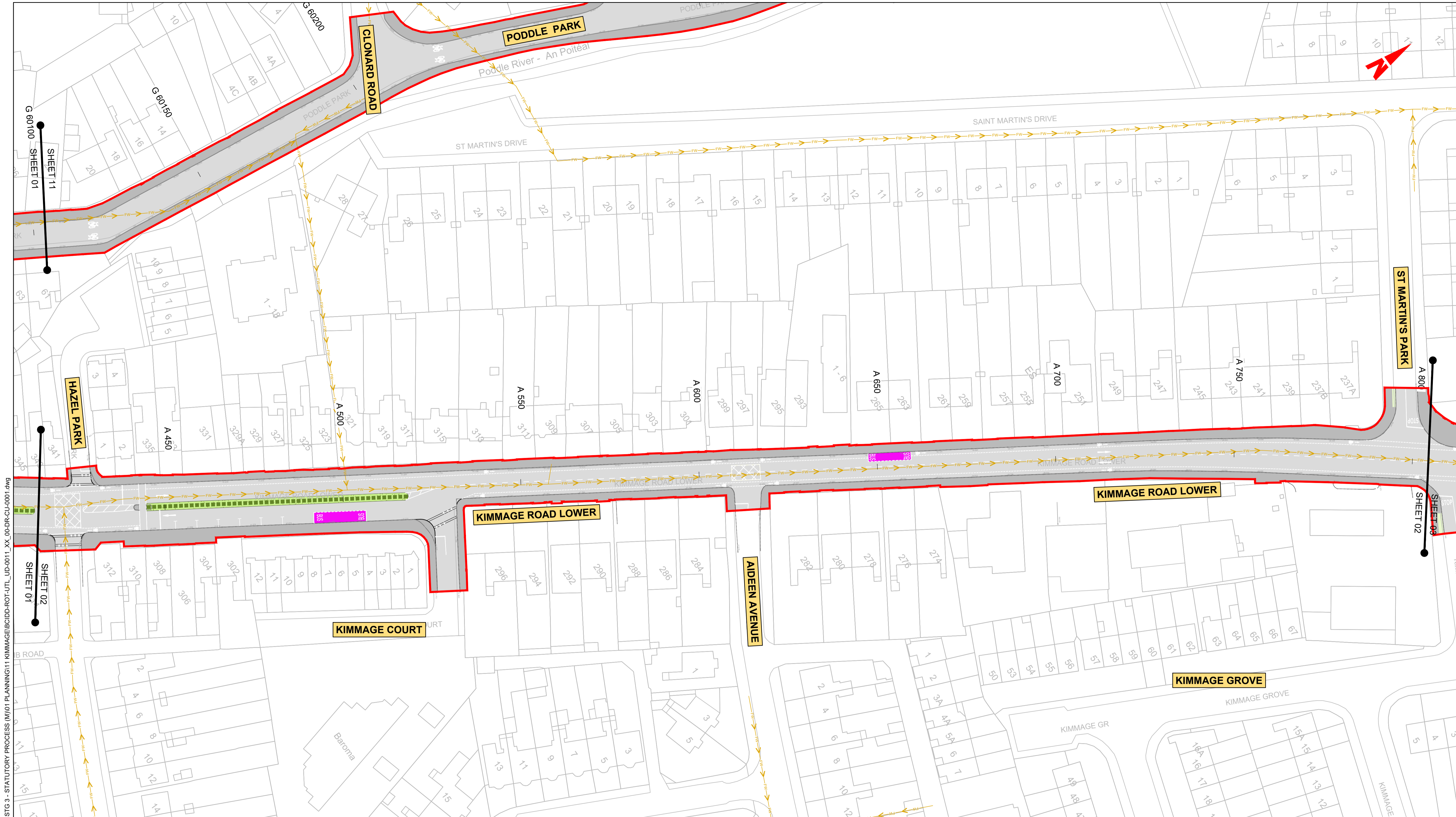
Programme Code: BCIDD  
Originator Code: ROT  
QMS Code: [blank]

Drawn: DS  
Checked: EE  
Approved: SMG

Programme Title: <b>BUSCONNECTS DUBLIN</b>			
CORE BUS CORRIDORS INFRASTRUCTURE WORKS			
Drawing Title: KIMMAGE TO CITY CENTRE CORE BUS CORRIDOR SCHEME IW FOUL SEWER ASSET ALTERATIONS			
Drawing File Name: BCIDD-ROT-UTL_UD-0011_XX_00-DR-CU-0001	Sheet Number: 01 of 14	Status: A	Rev: M01

DO NOT SCALE USE FIGURED DIMENSIONS ONLY





**LEGEND:**

	EXISTING KERB LINE		PROPOSED KERB LINE
	EXISTING FOUL WATER DRAINAGE		FOUL WATER DRAINAGE - PROPOSED DIVERSION
	EXISTING COMBINED DRAINAGE NETWORK		COMBINED DRAINAGE NETWORK - PROPOSED DIVERSION
	EXISTING NETWORK TO BE DECOMMISSIONED		SITE BOUNDARY LINE
			TEMPORARY LAND ACQUISITION

**NOTES:**

- UTILITY LOCATIONS ARE INDICATIVE ONLY AND BASED ON UTILITY PROVIDER RECORDS



**Disclaimer:**

a. © National Transport Authority (NTA) 2022. This drawing is confidential and the copyright in it is owned by NTA. This drawing must not be either loaned, copied or otherwise reproduced in whole or in part or used for any purpose without the prior permission of NTA.

b. This drawing is to be used for the design element identified in the titleblock. Other information shown is to be considered indicative only. The drawing is to be read in conjunction with all other relevant design drawings.

c. O.S. data used for plans are printed under © Ordnance Survey Ireland Government of Ireland. All rights reserved. Licence Number 2022/OSI\_NMA\_180 National Transport Authority. All elevations are in metres and relate to OSI Geoid Model (OSGM15) Mean Head. All Co-ordinates are in Irish Transverse Mercator Grid (ITM) as defined by OSI active local GPS station.

d. Information concerning the position of apparatus shown on this drawing is based on drawings supplied by the utility owners and/or the utility works contractor, whilst every care has been taken in the preparation of this drawing, positions should be taken as approximate and are intended for general guidance only and no representation is made by the NTA as to the accuracy, completeness, sufficiency or otherwise of this drawing and the position of the apparatus. The information contained herein does not purport to be comprehensive or final as the apparatus is subject to being altered and/or superceded. Recipients should not rely on this information. Any liabilities are hereby expressly disclaimed.

e. The information contained herein has been provided by the NTA but does not purport to be comprehensive or final. Recipients should not rely on the information. Neither the NTA nor any of its directors, officers, employees, agents, stakeholders or advisers make any representation or warranty as to, or accept any liability or responsibility in relation to, the adequacy, accuracy, reasonableness or completeness of the information provided as part of this document or any matter on which the information is based (including but not limited to loss or damage arising as a result of reliance by recipients on the information or any part of it). Any liabilities are hereby expressly disclaimed.



Rev	Date	Drn	Chk'd	App'd	Description
M01	FEB 2023	DS	LS	SMG	ISSUED FOR PHASE 4: PLANNING

Client  
**NTA**  
 Údarás Náisiúnta Iompair  
 National Transport Authority

Engineering Designer  
**CIROD**  
 TYPSA

Programme Title  
**BUSCONNECTS DUBLIN  
 CORE BUS CORRIDORS INFRASTRUCTURE WORKS**

Drawing Title  
 KIMMAGE TO CITY CENTRE CORE BUS CORRIDOR SCHEME  
 IW FOUL SEWER ASSET ALTERATIONS

Date  
 FEB 2023

Scale  
 1:500 @ A1  
 1:1000 @ A3

Drawn  
 DS

Checked  
 EE

Approved  
 SMG

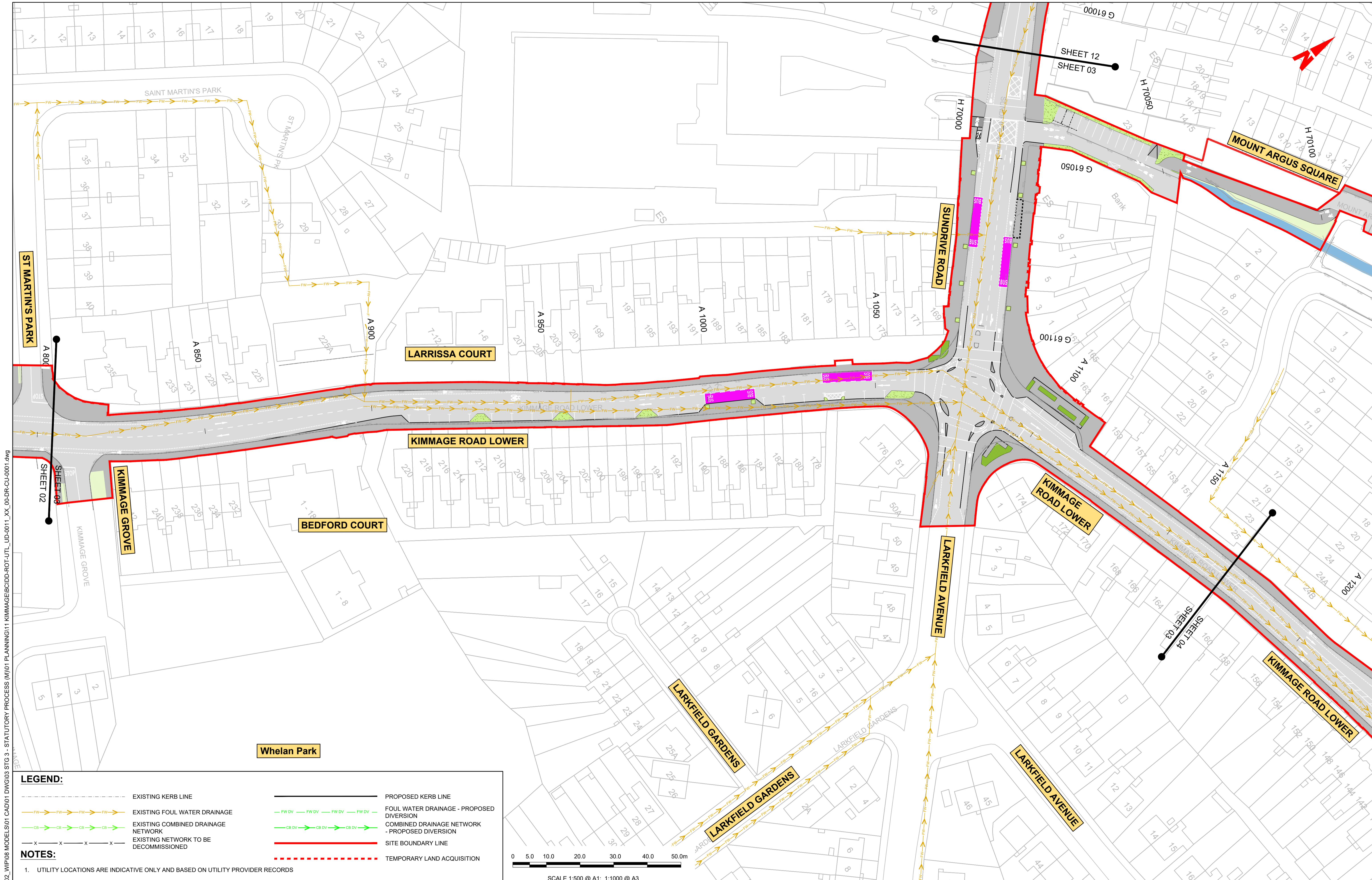
Drawing File Name  
 BCIDD-ROT-UTL\_UD-0011\_XX\_00-DR-CU-0002

Sheet Number  
 02 of 14

Status  
 A

Rev  
 M01





W:\000000\11\171117-02\_WIP\08 MODELS\01 CAD\01 STG 3 - STATUTORY PROCESS (M)\01 PLANNING\11 KIMMAGE\BCIDD-ROT-UTL\_UD-0011\_XX\_00-DR-CU-0001.dwg

**LEGEND:**

	EXISTING KERB LINE		PROPOSED KERB LINE
	EXISTING FOUL WATER DRAINAGE		FOUL WATER DRAINAGE - PROPOSED DIVERSION
	EXISTING COMBINED DRAINAGE NETWORK		COMBINED DRAINAGE NETWORK - PROPOSED DIVERSION
	EXISTING NETWORK TO BE DECOMMISSIONED		SITE BOUNDARY LINE
			TEMPORARY LAND ACQUISITION

**NOTES:**

- UTILITY LOCATIONS ARE INDICATIVE ONLY AND BASED ON UTILITY PROVIDER RECORDS



**Disclaimer:**

a. © National Transport Authority (NTA) 2022. This drawing is confidential and the copyright in it is owned by NTA. This drawing must not be either loaned, copied or otherwise reproduced in whole or in part or used for any purpose without the prior permission of NTA.

b. This drawing is to be used for the design element identified in the titlebox. Other information shown is to be considered indicative only. The drawing is to be read in conjunction with all other relevant design drawings.

c. O.S. data used for plans are printed under © Ordnance Survey Ireland Government of Ireland. All rights reserved. Licence Number 2022/OSI\_NMA\_180 National Transport Authority. All elevations are in metres and relate to OSI Geoid Model (OSGM15) Mean Head. All Co-ordinates are in Irish Transverse Mercator Grid (ITM) as defined by OSI active local GPS station.

d. Information concerning the position of apparatus shown on this drawing is based on drawings supplied by the utility owners and/or the utility works contractor, whilst every care has been taken in the preparation of this drawing, positions should be taken as approximate and are intended for general guidance only and no representation is made by the NTA as to the accuracy, completeness, sufficiency or otherwise of this information. The information contained herein does not purport to be comprehensive or final as the apparatus is subject to being altered and/or superseded. Recipients should not rely on this information. Any liabilities are hereby expressly disclaimed.

e. The information contained herein has been provided by the NTA but does not purport to be comprehensive or final. Recipients should not rely on the information. Neither the NTA nor any of its directors, officers, employees, agents, stakeholders or advisers make any representation or warranty as to, or accept any liability or responsibility in relation to, the adequacy, accuracy, reasonableness or completeness of the information provided as part of this document or any matter on which the information is based (including but not limited to loss or damage arising as a result of reliance by recipients on the information or any part of it). Any liabilities are hereby expressly disclaimed.



Rev	Date	Drn	Chk'd	App'd	Description
M01	FEB 2023	DS	LS	SMG	ISSUED FOR PHASE 4: PLANNING

Client: **NTA**  
Údarás Náisiúnta Iompair  
National Transport Authority

Engineering Designer: **CIROD**  
TYPSA

Date: FEB 2023  
Scale: 1:500 @ A1  
1:1000 @ A3

Programme Code: BCIDD  
Originator Code: ROT

Drawn: DS  
Checked: EE  
Approved: SMG

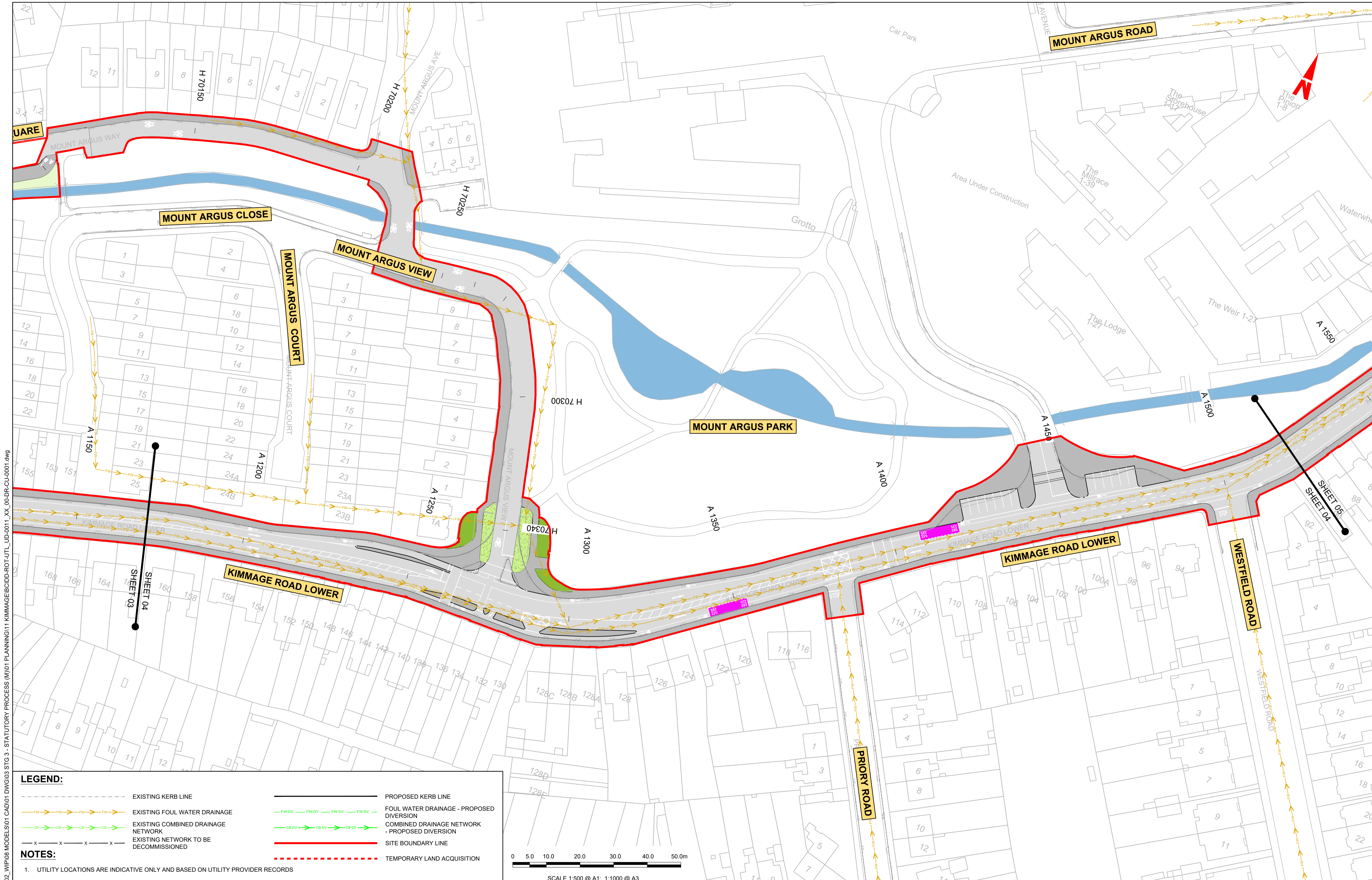
Programme Title: **BUSCONNECTS DUBLIN**  
**CORE BUS CORRIDORS INFRASTRUCTURE WORKS**

Drawing Title: **KIMMAGE TO CITY CENTRE CORE BUS CORRIDOR SCHEME**  
**IW FOUL SEWER ASSET ALTERATIONS**

Drawing File Name: BCIDD-ROT-UTL\_UD-0011\_XX\_00-DR-CU-0003  
Sheet Number: 03 of 14  
Status: A  
Rev: M01

DO NOT SCALE USE FIGURED DIMENSIONS ONLY





**LEGEND:**

- EXISTING KERB LINE
- PROPOSED KERB LINE
- EXISTING FOUL WATER DRAINAGE
- FOUL WATER DRAINAGE - PROPOSED DIVERSION
- EXISTING COMBINED DRAINAGE NETWORK
- COMBINED DRAINAGE NETWORK - PROPOSED DIVERSION
- EXISTING NETWORK TO BE DECOMMISSIONED
- SITE BOUNDARY LINE
- TEMPORARY LAND ACQUISITION

**NOTES:**

- UTILITY LOCATIONS ARE INDICATIVE ONLY AND BASED ON UTILITY PROVIDER RECORDS



**Disclaimer:**

a. © National Transport Authority (NTA) 2022. This drawing is confidential and the copyright in it is owned by NTA. This drawing must not be either loaned, copied or otherwise reproduced in whole or in part or used for any purpose without the prior permission of NTA.

b. This drawing is to be used for the design element identified in the titlebox. Other information shown is to be considered indicative only. The drawing is to be read in conjunction with all other relevant design drawings.

c. O.S. data used for plans are printed under © Ordnance Survey Ireland Government of Ireland. All rights reserved. Licence Number 2022/OSI\_NMA\_180 National Transport Authority. All elevations are in metres and relate to OSI Geoid Model (OSGM15) Mean Head. All Co-ordinates are in Irish Transverse Mercator Grid (ITM) as defined by OSI active local GPS station.

d. Information concerning the position of apparatus shown on this drawing is based on drawings supplied by the utility owners and/or the utility works contractor, whilst every care has been taken in the preparation of this drawing, positions should be taken as approximate and are intended for general guidance only and no representation is made by the NTA as to the accuracy, completeness, sufficiency or otherwise of this drawing and the position of the apparatus. The information contained herein does not purport to be comprehensive or final as the apparatus is subject to being altered and/or superceded. Recipients should not rely on this information. Any liabilities are hereby expressly disclaimed.

e. The information contained herein has been provided by the NTA but does not purport to be comprehensive or final. Recipients should not rely on the information. Neither the NTA nor any of its directors, officers, employees, agents, stakeholders or advisers make any representation or warranty as to, or accept any liability or responsibility in relation to, the adequacy, accuracy, reasonableness or completeness of the information provided as part of this document or any matter on which the information is based (including but not limited to loss or damage arising as a result of reliance by recipients on the information or any part of it). Any liabilities are hereby expressly disclaimed.



Rev	Date	Drm	Chk'd	App'd	Description
M01	FEB 2023	DS	LS	SMG	ISSUED FOR PHASE 4: PLANNING

Client: **NTA**  
Údarás Náisiúnta Iompair  
National Transport Authority

Engineering Designer: **CIROD**  
TYPSA

Date: FEB 2023  
Scale: 1:500 @ A1  
1:1000 @ A3

Programme Code: BCIDD  
Originator Code: ROT

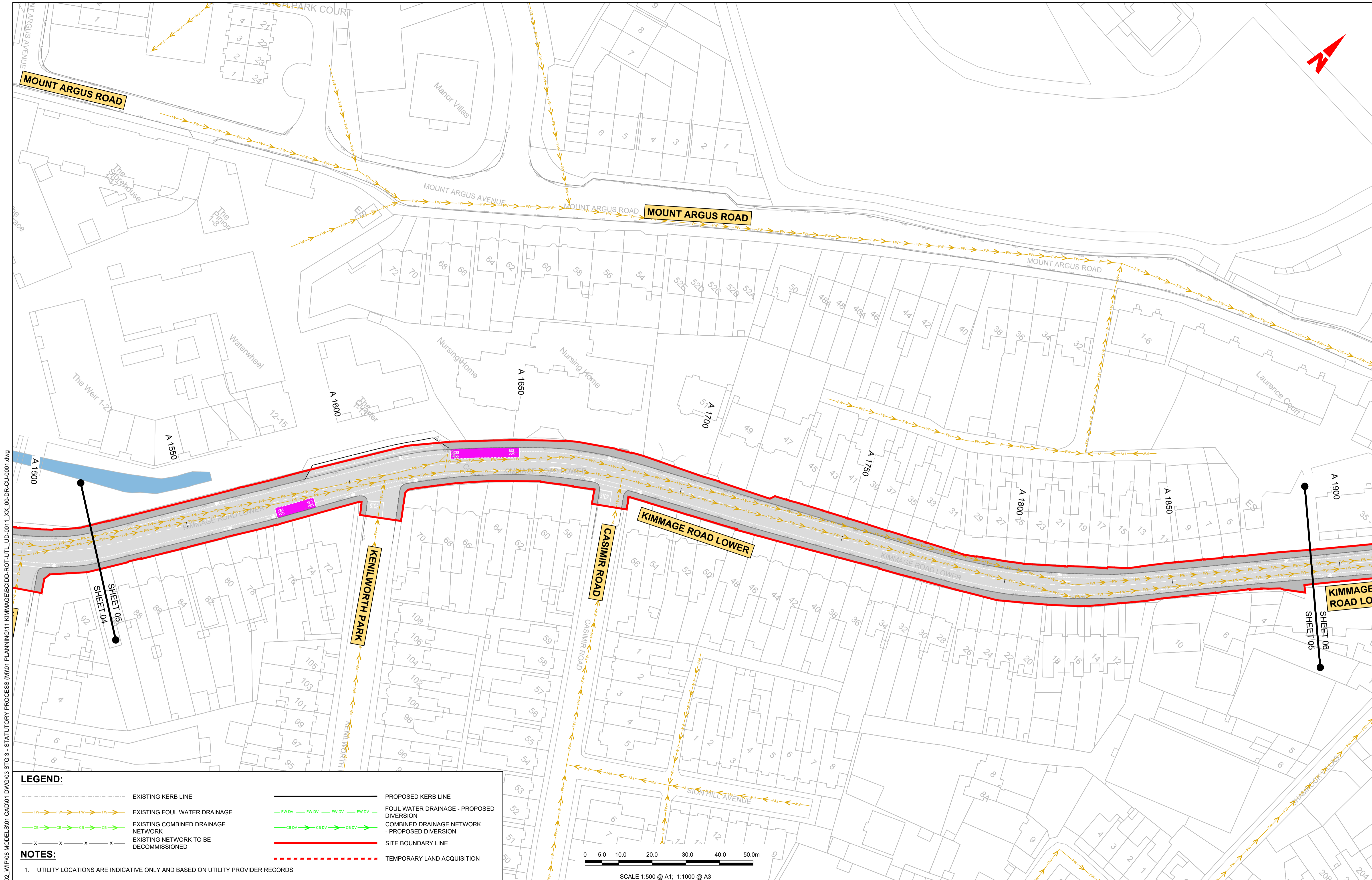
Drawn: DS  
Checked: EE  
Approved: SMG

Programme Title: <b>BUSCONNECTS DUBLIN CORE BUS CORRIDORS INFRASTRUCTURE WORKS</b>			
Drawing Title: <b>KIMMAGE TO CITY CENTRE CORE BUS CORRIDOR SCHEME IW FOUL SEWER ASSET ALTERATIONS</b>			
Drawing File Name: BCIDD-ROT-UTL_UD-0011_XX_00-DR-CU-0004	Sheet Number: 04 of 14	Status: A	Rev: M01

DO NOT SCALE USE FIGURED DIMENSIONS ONLY

\\produbhp1\j\2019\19117-02\_WIP\08 MODELS\01 CAD\01 DWG\03 STG 3 - STATUTORY PROCESS (M)\01 PLANNING\11 KIMMAGE\BCIDD-ROT-UTL\_UD-0011\_XX\_00-DR-CU-0001.dwg





**LEGEND:**

	EXISTING KERB LINE		PROPOSED KERB LINE
	EXISTING FOUL WATER DRAINAGE		FOUL WATER DRAINAGE - PROPOSED DIVERSION
	EXISTING COMBINED DRAINAGE NETWORK		COMBINED DRAINAGE NETWORK - PROPOSED DIVERSION
	EXISTING NETWORK TO BE DECOMMISSIONED		SITE BOUNDARY LINE
			TEMPORARY LAND ACQUISITION

**NOTES:**

- UTILITY LOCATIONS ARE INDICATIVE ONLY AND BASED ON UTILITY PROVIDER RECORDS

W:\000000\19171117-02\_WIP\08 MODELS\01 CAD\01 DWG\03 STG 3 - STATUTORY PROCESS (M)\01 PLANNING\11 KIMMAGE\BCIDD-ROT-UTL\_UD-0011\_XX\_00-DR-CU-0001.dwg

**Disclaimer**

a. © National Transport Authority (NTA) 2022. This drawing is confidential and the copyright in it is owned by NTA. This drawing must not be either loaned, copied or otherwise reproduced in whole or in part or used for any purpose without the prior permission of NTA.

b. This drawing is to be used for the design element identified in the titleblock. Other information shown is to be considered indicative only. The drawing is to be read in conjunction with all other relevant design drawings.

c. O.S. data used for plans are printed under © Ordnance Survey Ireland Government of Ireland. All rights reserved. Licence Number 2022/OSI\_NMA\_180 National Transport Authority. All elevations are in metres and relate to OSI Geoid Model (OSGM15) Mean Head. All Co-ordinates are in Irish Transverse Mercator Grid (ITM) as defined by OSI active local GPS station.

d. Information concerning the position of apparatus shown on this drawing is based on drawings supplied by the utility owners and/or the utility works contractor, whilst every care has been taken in the preparation of this drawing, positions should be taken as approximate and are intended for general guidance only and no representation is made by the NTA as to the accuracy, completeness, sufficiency or otherwise of this drawing and the position of the apparatus. The information contained herein does not purport to be comprehensive or final as the apparatus is subject to being altered and/or superceded. Recipients should not rely on this information. Any liabilities are hereby expressly disclaimed.

e. The information contained herein has been provided by the NTA but does not purport to be comprehensive or final. Recipients should not rely on the information. Neither the NTA nor any of its directors, officers, employees, agents, stakeholders or advisers make any representation or warranty as to, or accept any liability or responsibility in relation to, the adequacy, accuracy, reasonableness or completeness of the information provided as part of this document or any matter on which the information is based (including but not limited to loss or damage arising as a result of reliance by recipients on the information or any part of it). Any liabilities are hereby expressly disclaimed.



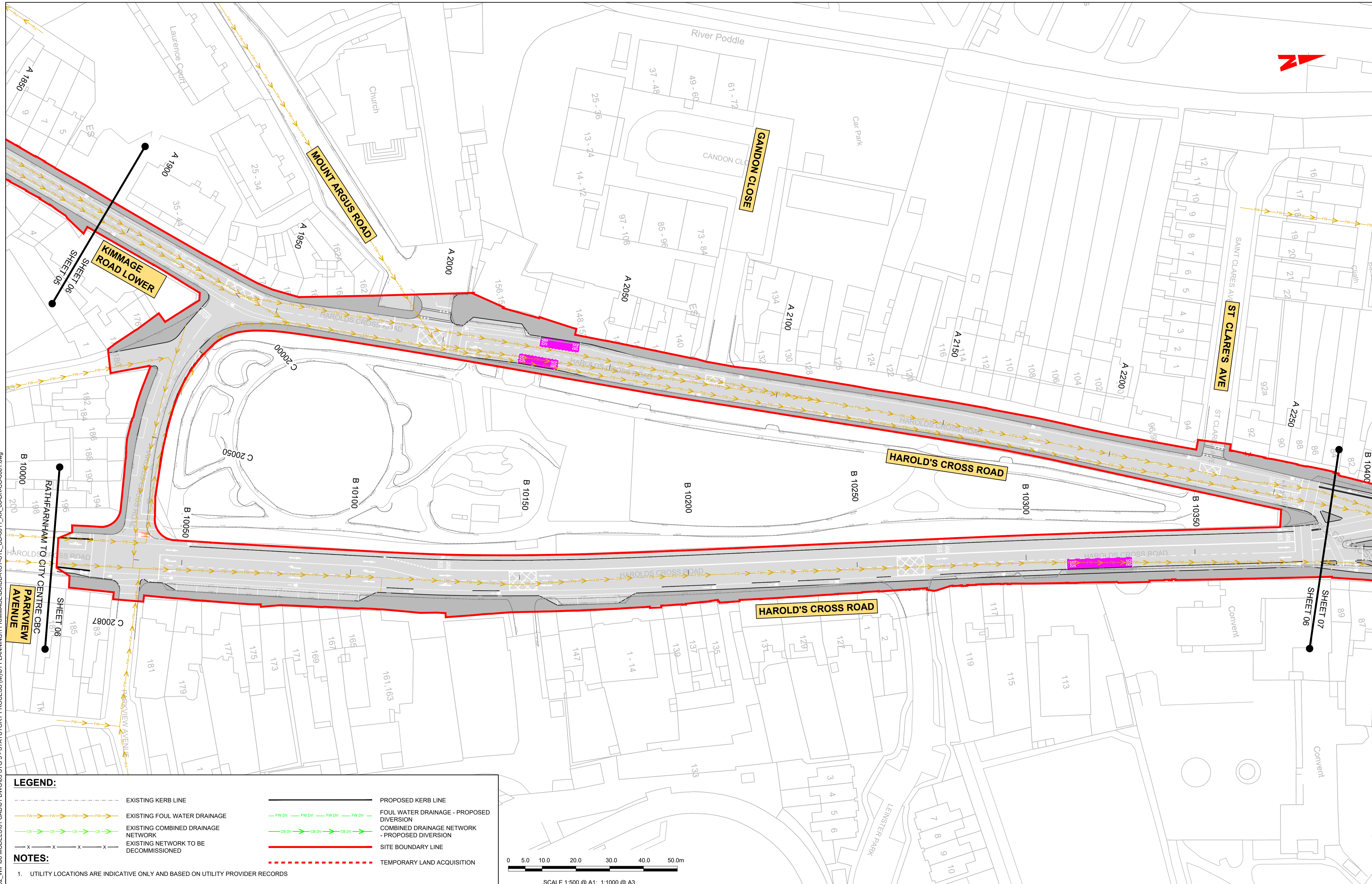
Rev	Date	Drm	Chk'd	App'd	Description
M01	FEB 2023	DS	LS	SMG	ISSUED FOR PHASE 4: PLANNING

Client <b>NTA</b> Údarás Náisiúnta Iompair National Transport Authority		Engineering Designer <b>CIROD</b> TYPSA		
Date FEB 2023	Scale 1:500 @ A1 1:1000 @ A3	Drawn DS	Checked EE	Approved SMG
Programme Code BCIDD	Originator Code ROT	QMS Code		

Programme Title <b>BUSCONNECTS DUBLIN</b> CORE BUS CORRIDORS INFRASTRUCTURE WORKS			
Drawing Title KIMMAGE TO CITY CENTRE CORE BUS CORRIDOR SCHEME IW FOUL SEWER ASSET ALTERATIONS			
Drawing File Name BCIDD-ROT-UTL_UD-0011_XX_00-DR-CU-0005	Sheet Number 05 of 14	Status A	Rev M01

DO NOT SCALE USE FIGURED DIMENSIONS ONLY





**LEGEND:**

	EXISTING KERB LINE		PROPOSED KERB LINE
	EXISTING FOUL WATER DRAINAGE		FOUL WATER DRAINAGE - PROPOSED DIVERSION
	EXISTING COMBINED DRAINAGE NETWORK		COMBINED DRAINAGE NETWORK - PROPOSED DIVERSION
	EXISTING NETWORK TO BE DECOMMISSIONED		SITE BOUNDARY LINE
			TEMPORARY LAND ACQUISITION

**NOTES:**

- UTILITY LOCATIONS ARE INDICATIVE ONLY AND BASED ON UTILITY PROVIDER RECORDS

\\noddup\p\j\2019\19117-02\_WIP\08 MODELS\01 CAD\01 DWG\03 STG 3 - STATUTORY PROCESS (M)\01 PLANNING\11 KIMMAGE\BCIDD-ROT-UTL\_UD-0011\_XX\_00-DR-CU-0001.dwg

**Disclaimer**

a. © National Transport Authority (NTA) 2022. This drawing is confidential and the copyright in it is owned by NTA. This drawing must not be either loaned, copied or otherwise reproduced in whole or in part or used for any purpose without the prior permission of NTA.

b. This drawing is to be used for the design element identified in the titlebox. Other information shown is to be considered indicative only. The drawing is to be read in conjunction with all other relevant design drawings.

c. O.S. data used for plans are printed under © Ordnance Survey Ireland Government of Ireland. All rights reserved. Licence Number 2022/OSI\_NMA\_180 National Transport Authority. All elevations are in metres and relate to OSI Geoid Model (OSGM15) Mean Head. All Co-ordinates are in Irish Transverse Mercator Grid (ITM) as defined by OSI active local GPS station.

d. Information concerning the position of apparatus shown on this drawing is based on drawings supplied by the utility owners and/or the utility works contractor, whilst every care has been taken as appropriate and are intended for general guidance only and no representation is made by the NTA as to the accuracy, completeness, sufficiency or otherwise of this drawing and the position of the apparatus. The information contained herein does not purport to be comprehensive or final as the apparatus is subject to being altered and/or superseded. Recipients should not rely on this information. Any liabilities are hereby expressly disclaimed.

e. The information contained herein has been provided by the NTA but does not purport to be comprehensive or final. Recipients should not rely on the information. Neither the NTA nor any of its directors, officers, employees, agents, stakeholders or advisers make any representation or warranty as to, or accept any liability or responsibility in relation to, the adequacy, accuracy, reasonableness or completeness of the information provided as part of this document or any matter on which the information is based (including but not limited to loss or damage arising as a result of reliance by recipients on the information or any part of it). Any liabilities are hereby expressly disclaimed.



Rev	Date	Drn	Chk'd	App'd	Description
M01	FEB 2023	DS	LS	SMG	ISSUED FOR PHASE 4: PLANNING

Client: **NTA**  
Údarás Náisiúnta Iompair  
National Transport Authority

Engineering Designer: **FIROD**  
TYPSA

Date: FEB 2023  
Scale: 1:500 @ A1  
1:1000 @ A3

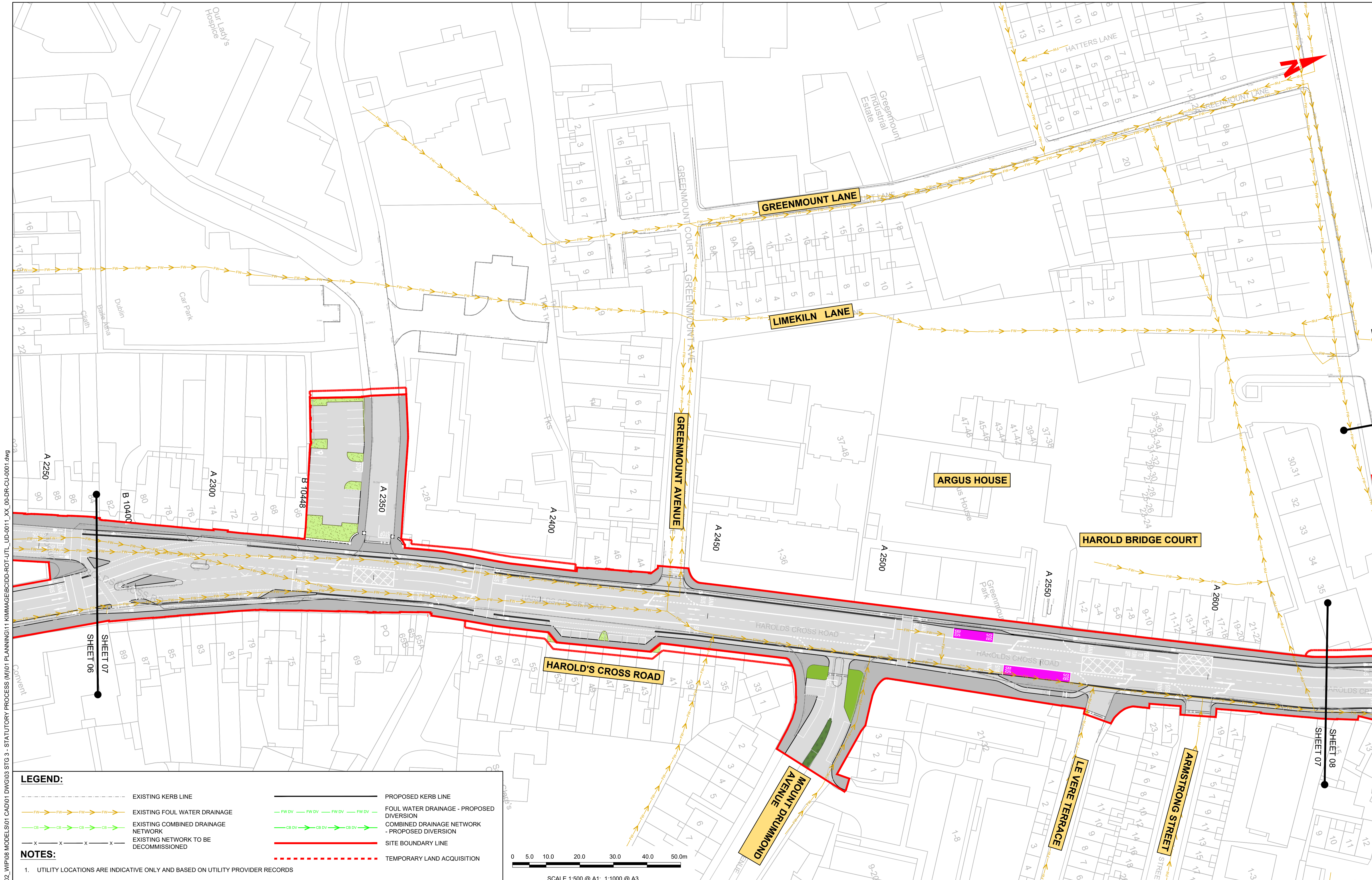
Drawn: DS  
Checked: EE  
Approved: SMG

Programme Code: BCIDD  
Originator Code: ROT  
QMS Code:

Programme Title: <b>BUSCONNECTS DUBLIN CORE BUS CORRIDORS INFRASTRUCTURE WORKS</b>			
Drawing Title: <b>KIMMAGE TO CITY CENTRE CORE BUS CORRIDOR SCHEME IW FOUL SEWER ASSET ALTERATIONS</b>			
Drawing File Name: BCIDD-ROT-UTL_UD-0011_XX_00-DR-CU-0006	Sheet Number: 06 of 14	Status: A	Rev: M01

DO NOT SCALE USE FIGURED DIMENSIONS ONLY



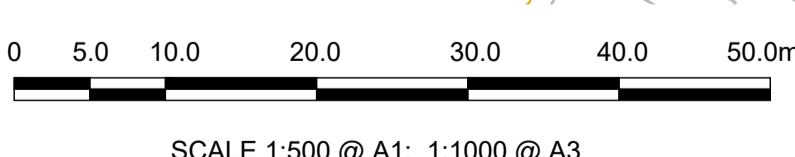


**LEGEND:**

	EXISTING KERB LINE		PROPOSED KERB LINE
	EXISTING FOUL WATER DRAINAGE		FOUL WATER DRAINAGE - PROPOSED DIVERSION
	EXISTING COMBINED DRAINAGE NETWORK		COMBINED DRAINAGE NETWORK - PROPOSED DIVERSION
	EXISTING NETWORK TO BE DECOMMISSIONED		SITE BOUNDARY LINE
			TEMPORARY LAND ACQUISITION

**NOTES:**

- UTILITY LOCATIONS ARE INDICATIVE ONLY AND BASED ON UTILITY PROVIDER RECORDS



**Disclaimer**

a. © National Transport Authority (NTA) 2022. This drawing is confidential and the copyright in it is owned by NTA. This drawing must not be either loaned, copied or otherwise reproduced in whole or in part or used for any purpose without the prior permission of NTA.

b. This drawing is to be used for the design element identified in the titlebox. Other information shown is to be considered indicative only. The drawing is to be read in conjunction with all other relevant design drawings.

c. O.S. data used for plans are printed under © Ordnance Survey Ireland Government of Ireland. All rights reserved. Licence Number 2022/OSI\_NMA\_180 National Transport Authority. All elevations are in metres and relate to OSI Geoid Model (OSGM15) Mean Head. All Co-ordinates are in Irish Transverse Mercator Grid (ITM) as defined by OSI active local GPS station.

d. Information concerning the position of apparatus shown on this drawing is based on drawings supplied by the utility owners and/or the utility works contractor, whilst every care has been taken in the preparation of this drawing, positions should be taken as approximate and are intended for general guidance only and no representation is made by the NTA as to the accuracy, completeness, sufficiency or otherwise of this drawing and the position of the apparatus. The information contained herein does not purport to be comprehensive or final as the apparatus is subject to being altered and/or superceded. Recipients should not rely on this information. Any liabilities are hereby expressly disclaimed.

e. The information contained herein has been provided by the NTA but does not purport to be comprehensive or final. Recipients should not rely on the information. Neither the NTA nor any of its directors, officers, employees, agents, stakeholders or advisers make any representation or warranty as to, or accept any liability or responsibility in relation to, the adequacy, accuracy, reasonableness or completeness of the information provided as part of this document or any matter on which the information is based (including but not limited to loss or damage arising as a result of reliance by recipients on the information or any part of it). Any liabilities are hereby expressly disclaimed.



Rev	Date	Drm	Chk'd	App'd	Description
M01	FEB 2023	DS	LS	SMG	ISSUED FOR PHASE 4: PLANNING

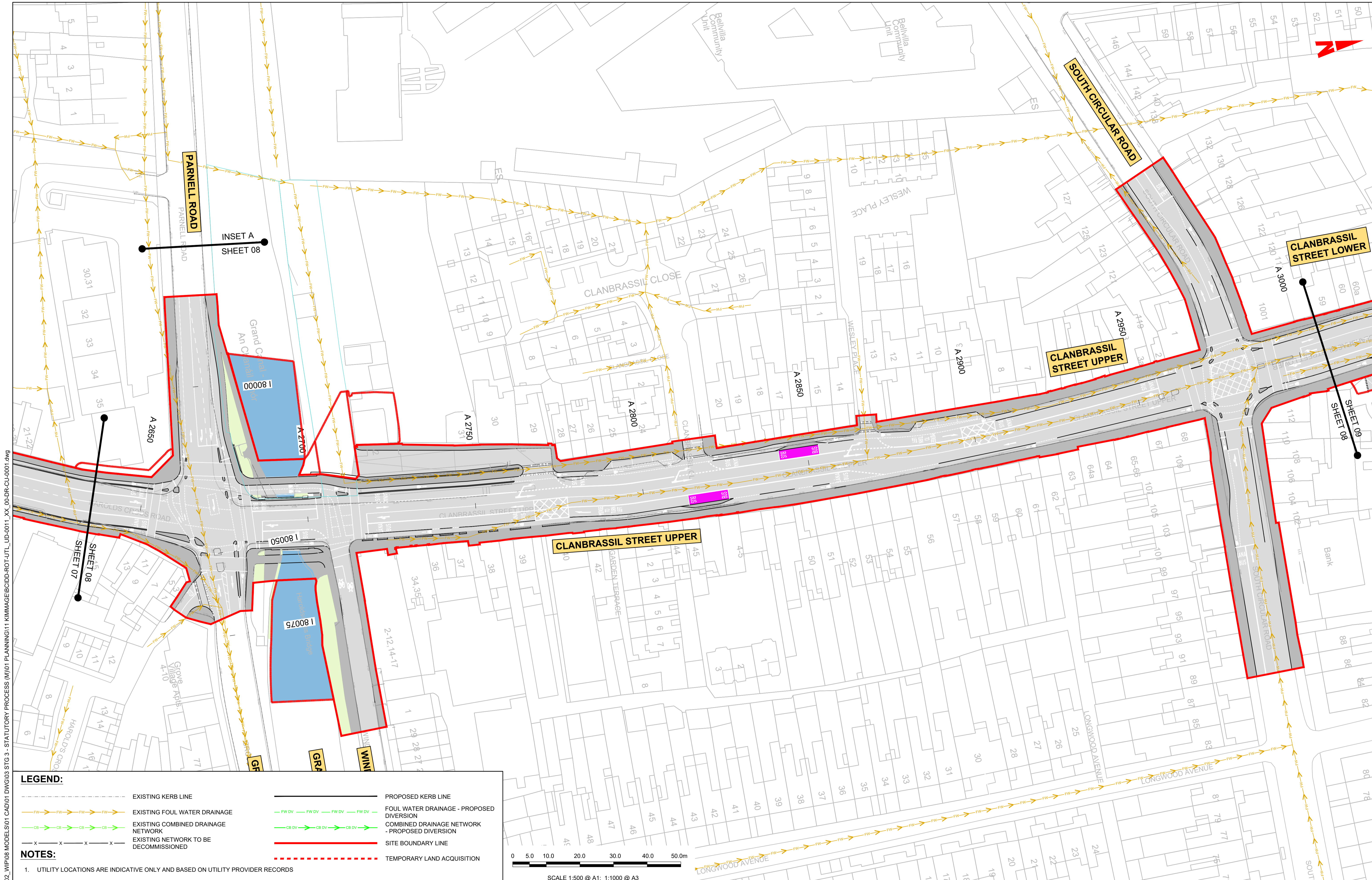
Client <b>NTA</b> Udarás Náisiúnta Iompair National Transport Authority		Engineering Designer <b>CIROD</b> TYPSA		
Date FEB 2023	Scale 1:500 @ A1 1:1000 @ A3	Drawn DS	Checked EE	Approved SMG
Programme Code BCIDD	Originator Code ROT	QMS Code		

Programme Title <b>BUSCONNECTS DUBLIN CORE BUS CORRIDORS INFRASTRUCTURE WORKS</b>				
Drawing Title KIMMAGE TO CITY CENTRE CORE BUS CORRIDOR SCHEME IW FOUL SEWER ASSET ALTERATIONS				
Drawing File Name BCIDD-ROT-UTL_UD-0011_XX_00-DR-CU-0007	Sheet Number 07 of 14	Status A	Rev M01	

DO NOT SCALE USE FIGURED DIMENSIONS ONLY

\\woodub\p\j\2019\1917117-02\_WIP\08 MODELS\01 CAD\01 DWG\03 STG 3 - STATUTORY PROCESS (M)\01 PLANNING\11 KIMMAGE\BCIDD-ROT-UTL\_UD-0011\_XX\_00-DR-CU-0001.dwg



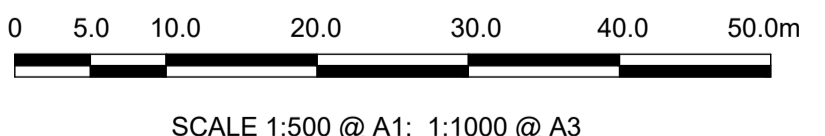


**LEGEND:**

- EXISTING KERB LINE
- PROPOSED KERB LINE
- EXISTING FOUL WATER DRAINAGE
- FOUL WATER DRAINAGE - PROPOSED DIVERSION
- EXISTING COMBINED DRAINAGE NETWORK
- COMBINED DRAINAGE NETWORK - PROPOSED DIVERSION
- EXISTING NETWORK TO BE DECOMMISSIONED
- SITE BOUNDARY LINE
- TEMPORARY LAND ACQUISITION

**NOTES:**

- UTILITY LOCATIONS ARE INDICATIVE ONLY AND BASED ON UTILITY PROVIDER RECORDS



**Disclaimer:**

a. © National Transport Authority (NTA) 2022. This drawing is confidential and the copyright in it is owned by NTA. This drawing must not be either loaned, copied or otherwise reproduced in whole or in part or used for any purpose without the prior permission of NTA.

b. This drawing is to be used for the design element identified in the titleblock. Other information shown is to be considered indicative only. The drawing is to be read in conjunction with all other relevant design drawings.

c. O.S. data used for plans are printed under © Ordnance Survey Ireland Government of Ireland. All rights reserved. Licence Number 2022/OSI\_NMA\_180 National Transport Authority. All elevations are in metres and relate to OSI Geoid Model (OSGM15) Mean Head. All Co-ordinates are in Irish Transverse Mercator Grid (ITM) as defined by OSI active local GPS station.

d. Information concerning the position of apparatus shown on this drawing is based on drawings supplied by the utility owners and/or the utility works contractor, whilst every care has been taken as appropriate and are intended for general guidance only and no representation is made by the NTA as to the accuracy, completeness, sufficiency or otherwise of this information. The drawing is subject to being altered and/or superseded. Recipients should not rely on this information. Any liabilities are hereby expressly disclaimed.

e. The information contained herein has been provided by the NTA but does not purport to be comprehensive or final. Recipients should not rely on the information. Neither the NTA nor any of its directors, officers, employees, agents, stakeholders or advisers make any representation or warranty as to, or accept any liability or responsibility in relation to, the adequacy, accuracy, reasonableness or completeness of the information provided as part of this document or any matter on which the information is based (including but not limited to loss or damage arising as a result of reliance by recipients on the information or any part of it). Any liabilities are hereby expressly disclaimed.



Rev	Date	Drm	Chk'd	App'd	Description
M01	FEB 2023	DS	LS	SMG	ISSUED FOR PHASE 4: PLANNING

Client: **NTA**  
Udaráis Náisiúnta Iompair  
National Transport Authority

Engineering Designer: **CIROD**  
TYPSA

Date: FEB 2023  
Scale: 1:500 @ A1  
1:1000 @ A3

Programme Code: BCIDD  
Originator Code: ROT

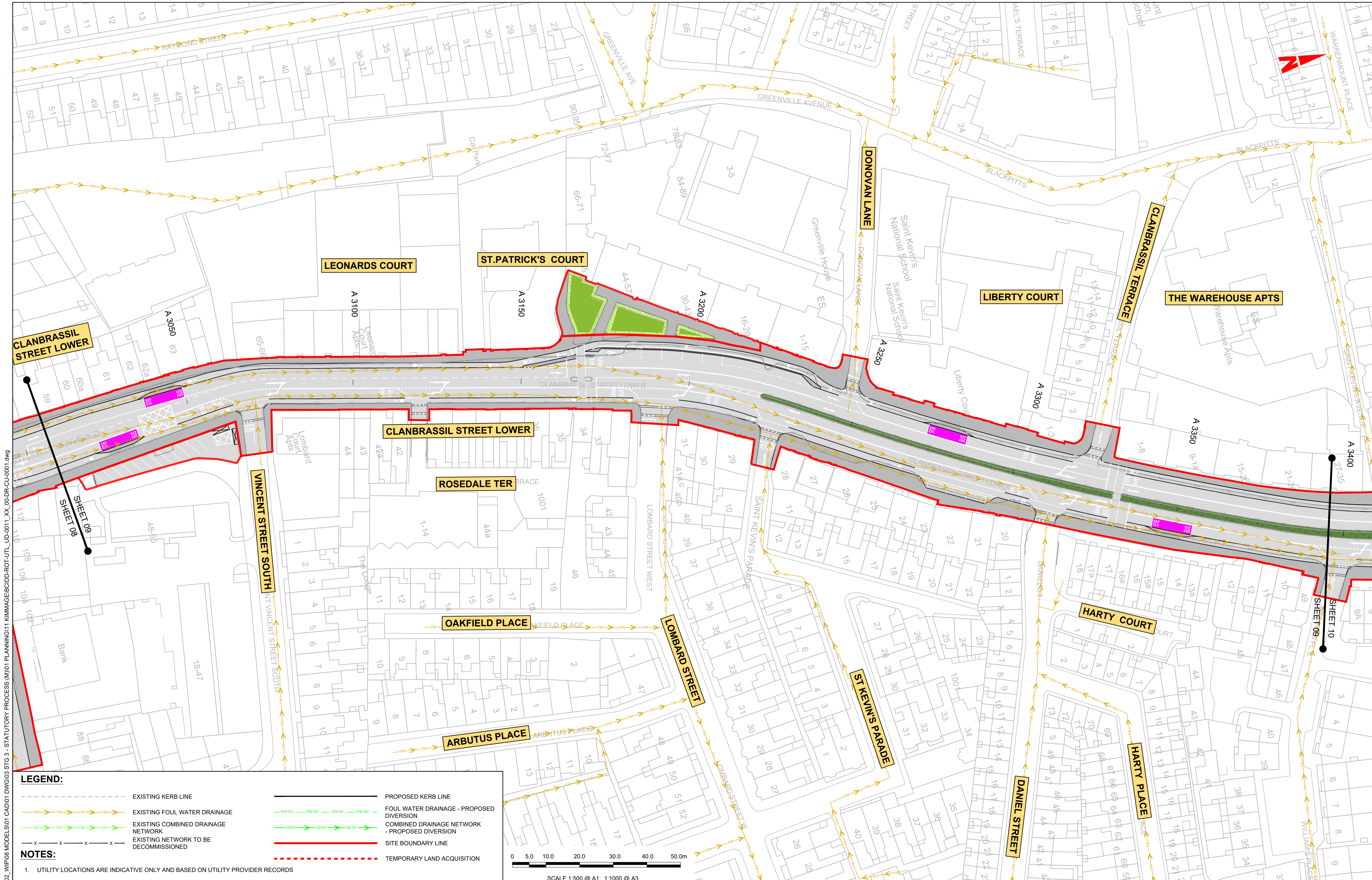
Drawn: DS  
Checked: EE  
Approved: SMG

Programme Title <b>BUSCONNECTS DUBLIN CORE BUS CORRIDORS INFRASTRUCTURE WORKS</b>	
Drawing Title KIMMAGE TO CITY CENTRE CORE BUS CORRIDOR SCHEME IW FOUL SEWER ASSET ALTERATIONS	
Drawing File Name BCIDD-ROT-UTL_UD-0011_XX_00-DR-CU-0008	Sheet Number 08 of 14
Status A	Rev M01

DO NOT SCALE USE FIGURED DIMENSIONS ONLY

\\produbp1\j2019\191171917-02\_WIP\08 MODELS\01 CAD\01 PLANNING\11 KIMMAGE\BCIDD-ROT-UTL\_UD-0011\_XX\_00-DR-CU-0001.dwg





**LEGEND:**

- EXISTING KERB LINE
- PROPOSED KERB LINE
- EXISTING FOUL WATER DRAINAGE
- FOUL WATER DRAINAGE - PROPOSED DIVERSION
- EXISTING COMBINED DRAINAGE NETWORK
- COMBINED DRAINAGE NETWORK - PROPOSED DIVERSION
- EXISTING NETWORK TO BE DECOMMISSIONED
- SITE BOUNDARY LINE
- TEMPORARY LAND ACQUISITION

**NOTES:**

- UTILITY LOCATIONS ARE INDICATIVE ONLY AND BASED ON UTILITY PROVIDER RECORDS



**Disclaimer:**

a. © National Transport Authority (NTA) 2022. This drawing is confidential and the copyright in it is owned by NTA. This drawing must not be either loaned, copied or otherwise reproduced in whole or in part or used for any purpose without the prior permission of NTA.

b. This drawing is to be used for the design element identified in the titleblock. Other information shown is to be considered indicative only. The drawing is to be read in conjunction with all other relevant design drawings.

c. O.S. data used for plans are printed under © Ordnance Survey Ireland Government of Ireland. All rights reserved. Licence Number 2022/OSI\_NMA\_180 National Transport Authority. All elevations are in metres and relate to OSI Geoid Model (OSGM15) Mean Head. All Co-ordinates are in Irish Transverse Mercator Grid (ITM) as defined by OSI active local GPS station.

d. Information concerning the position of apparatus shown on this drawing is based on drawings supplied by the utility owners and/or the utility works contractor, whilst every care has been taken in the preparation of this drawing, positions should be taken as approximate and are intended for general guidance only and no representation is made by the NTA as to the accuracy, completeness, sufficiency or otherwise of this drawing and the position of the apparatus. The information contained herein does not purport to be comprehensive or final as the apparatus is subject to being altered and/or superseded. Recipients should not rely on this information. Any liabilities are hereby expressly disclaimed.

e. The information contained herein has been provided by the NTA but does not purport to be comprehensive or final. Recipients should not rely on the information. Neither the NTA nor any of its directors, officers, employees, agents, stakeholders or advisers make any representation or warranty as to, or accept any liability or responsibility in relation to, the adequacy, accuracy, reasonableness or completeness of the information provided as part of this document or any matter on which the information is based (including but not limited to loss or damage arising as a result of reliance by recipients on the information or any part of it). Any liabilities are hereby expressly disclaimed.



Rev	Date	Drm	Chk'd	App'd	Description
M01	FEB 2023	DS	LS	SMG	ISSUED FOR PHASE 4: PLANNING

Client: **NTA**  
Udárás Náisiúnta Iompair  
National Transport Authority

Engineering Designer: **CIROD**  
TYPSA

Date: FEB 2023  
Scale: 1:500 @ A1  
1:1000 @ A3

Drawn: DS  
Checked: EE  
Approved: SMG

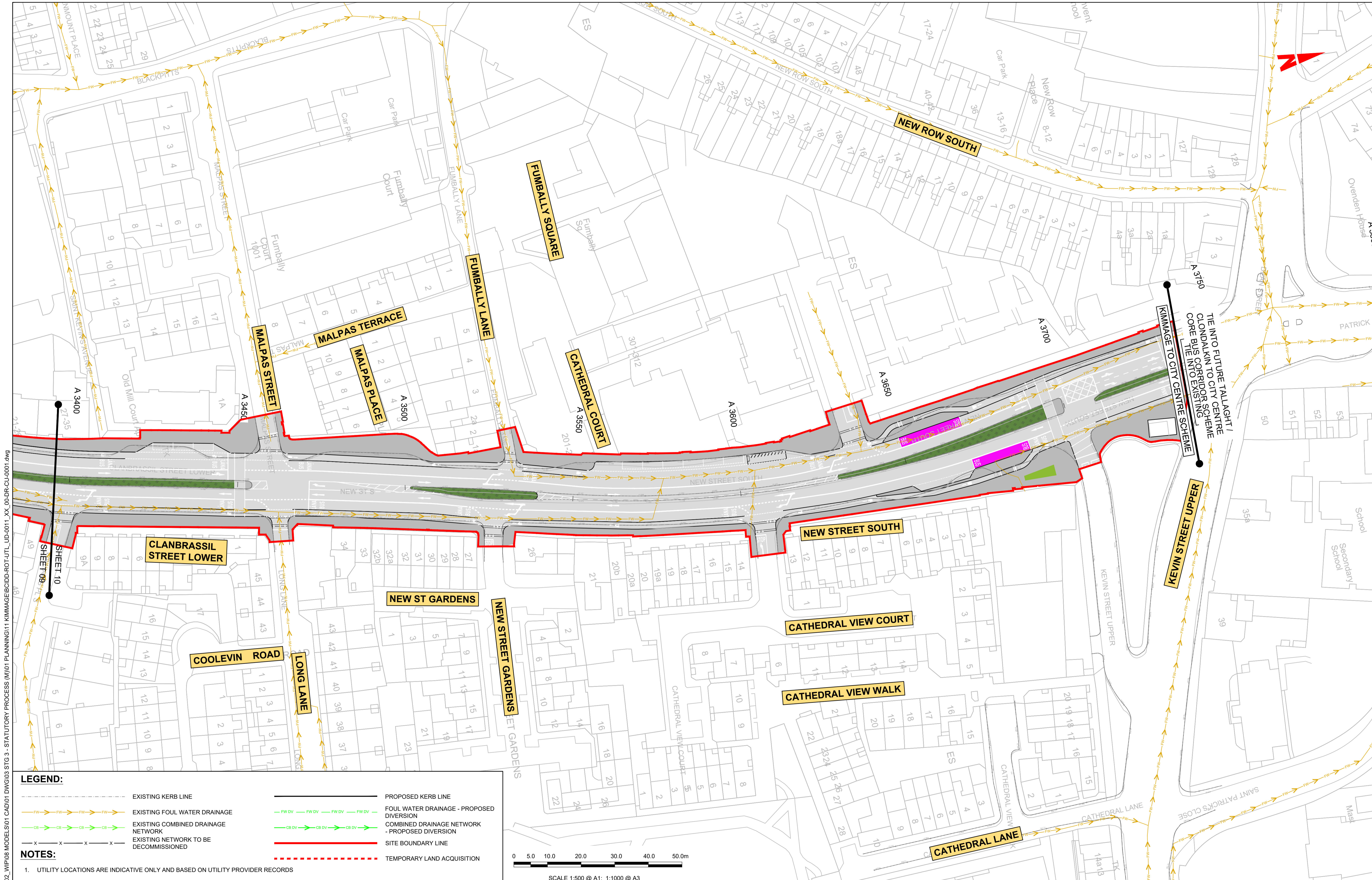
Programme Code: BCIDD  
Originator Code: ROT  
QMS Code:

Programme Title: <b>BUSCONNECTS DUBLIN CORE BUS CORRIDORS INFRASTRUCTURE WORKS</b>			
Drawing Title: <b>KIMMAGE TO CITY CENTRE CORE BUS CORRIDOR SCHEME IW FOUL SEWER ASSET ALTERATIONS</b>			
Drawing File Name: BCIDD-ROT-UTL_UD-0011_XX_00-DR-CU-0009	Sheet Number: 09 of 14	Status: A	Rev: M01

DO NOT SCALE USE FIGURED DIMENSIONS ONLY

\\produbp1\j2019\1917\17117-02\_WIPO8 MODELS\01 CAD\01 DWG\03 STG 3 - STATUTORY PROCESS (M)\01 PLANNING\11 KIMMAGE\BCIDD-ROT-UTL\_UD-0011\_XX\_00-DR-CU-0001.dwg



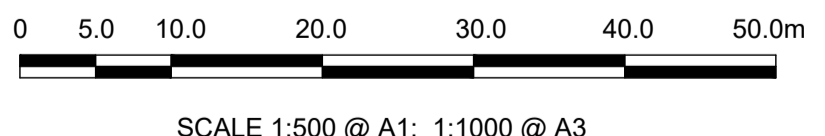


**LEGEND:**

- EXISTING KERB LINE
- EXISTING FOUL WATER DRAINAGE
- EXISTING COMBINED DRAINAGE NETWORK
- EXISTING NETWORK TO BE DECOMMISSIONED
- PROPOSED KERB LINE
- FOUL WATER DRAINAGE - PROPOSED DIVERSION
- COMBINED DRAINAGE NETWORK - PROPOSED DIVERSION
- SITE BOUNDARY LINE
- TEMPORARY LAND ACQUISITION

**NOTES:**

- UTILITY LOCATIONS ARE INDICATIVE ONLY AND BASED ON UTILITY PROVIDER RECORDS



**Disclaimer:**

a. © National Transport Authority (NTA) 2022. This drawing is confidential and the copyright in it is owned by NTA. This drawing must not be either loaned, copied or otherwise reproduced in whole or in part or used for any purpose without the prior permission of NTA.

b. This drawing is to be used for the design element identified in the titleblock. Other information shown is to be considered indicative only. The drawing is to be read in conjunction with all other relevant design drawings.

c. O.S. data used for plans are printed under © Ordnance Survey Ireland Government of Ireland. All rights reserved. Licence Number 2022/OSI\_NMA\_180 National Transport Authority. All elevations are in metres and relate to OSI Geoid Model (OSGM15) Mean Head. All Co-ordinates are in Irish Transverse Mercator Grid (ITM) as defined by OSI active local GPS station.

d. Information concerning the position of apparatus shown on this drawing is based on drawings supplied by the utility owners and/or the utility works contractor, whilst every care has been taken in the preparation of this drawing, positions should be taken as approximate and are intended for general guidance only and no representation is made by the NTA as to the accuracy, completeness, sufficiency or otherwise of this drawing and the position of the apparatus. The information contained herein does not purport to be comprehensive or final as the apparatus is subject to being altered and/or superseded. Recipients should not rely on this information. Any liabilities are hereby expressly disclaimed.

e. The information contained herein has been provided by the NTA but does not purport to be comprehensive or final. Recipients should not rely on the information. Neither the NTA nor any of its directors, officers, employees, agents, stakeholders or advisers make any representation or warranty as to, or accept any liability or responsibility in relation to, the adequacy, accuracy, reasonableness or completeness of the information provided as part of this document or any matter on which the information is based (including but not limited to loss or damage arising as a result of reliance by recipients on the information or any part of it). Any liabilities are hereby expressly disclaimed.



Rev	Date	Drm	Chk'd	App'd	Description
M01	FEB 2023	DS	LS	SMG	ISSUED FOR PHASE 4: PLANNING

Date	Scale	Drawn	Checked
FEB 2023	1:500 @ A1 1:1000 @ A3	DS	EE
Programme Code	Originator Code	QMS Code	Approved
BCIDD	ROT		SMG

<b>Programme Title</b> BUSCONNECTS DUBLIN CORE BUS CORRIDORS INFRASTRUCTURE WORKS	
<b>Drawing Title</b> KIMMAGE TO CITY CENTRE CORE BUS CORRIDOR SCHEME IW FOUL SEWER ASSET ALTERATIONS	
<b>Drawing File Name</b> BCIDD-ROT-UTL_UD-0011_XX_00-DR-CU-0010	<b>Sheet Number</b> 10 of 14
<b>Status</b> A	<b>Rev</b> M01

DO NOT SCALE USE FIGURED DIMENSIONS ONLY

W:\000000\1911719117-02\_WIP\08 MODELS\01 CAD\01 PLANNING\11 KIMMAGE\BCIDD-ROT-UTL\_UD-0011\_XX\_00-DR-CU-0001.dwg  
 SHEET 09  
 SHEET 10

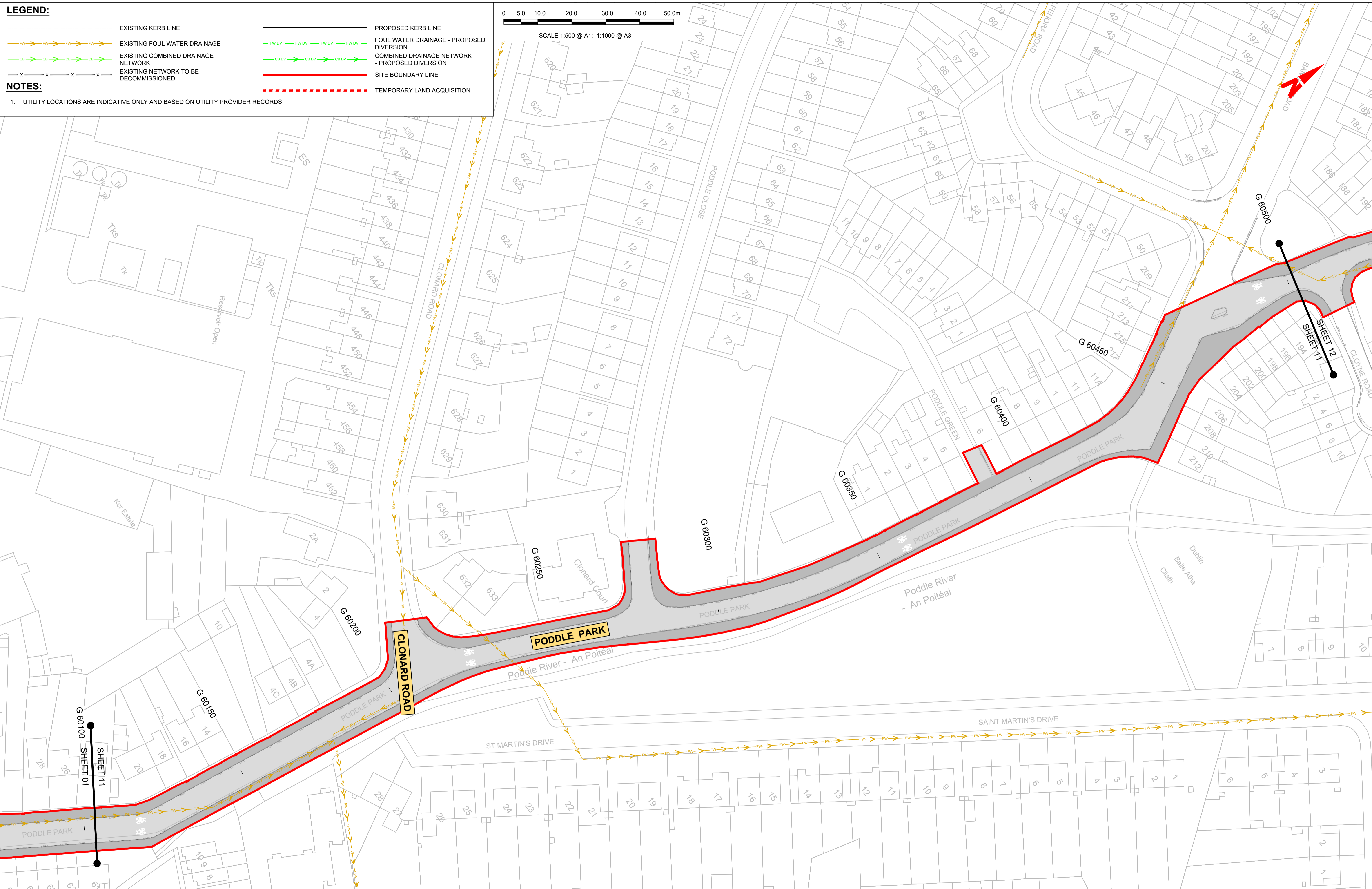
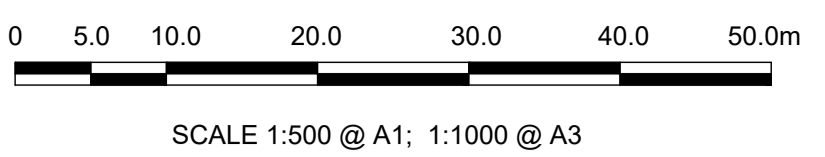


**LEGEND:**

- EXISTING KERB LINE
- PROPOSED KERB LINE
- EXISTING FOUL WATER DRAINAGE
- FOUL WATER DRAINAGE - PROPOSED DIVERSION
- EXISTING COMBINED DRAINAGE NETWORK
- COMBINED DRAINAGE NETWORK - PROPOSED DIVERSION
- EXISTING NETWORK TO BE DECOMMISSIONED
- SITE BOUNDARY LINE
- TEMPORARY LAND ACQUISITION

**NOTES:**

1. UTILITY LOCATIONS ARE INDICATIVE ONLY AND BASED ON UTILITY PROVIDER RECORDS



**Disclaimer**

a. © National Transport Authority (NTA) 2022. This drawing is confidential and the copyright in it is owned by NTA. This drawing must not be either loaned, copied or otherwise reproduced in whole or in part or used for any purpose without the prior permission of NTA.

b. This drawing is to be used for the design element identified in the titlebox. Other information shown is to be considered indicative only. The drawing is to be read in conjunction with all other relevant design drawings.

c. O.S. data used for plans are printed under © Ordnance Survey Ireland Government of Ireland. All rights reserved. Licence Number 2022/OSI\_NMA\_180 National Transport Authority. All elevations are in metres and relate to OSI Geoid Model (OSGM15) Mean Head. All Co-ordinates are in Irish Transverse Mercator Grid (ITM) as defined by OSI active local GPS station.

d. Information concerning the position of apparatus shown on this drawing is based on drawings supplied by the utility owners and/or the utility works contractor, whilst every care has been taken in the preparation of this drawing, positions should be taken as approximate and are intended for general guidance only and no representation is made by the NTA as to the accuracy, completeness, sufficiency or otherwise of this drawing and the position of the apparatus. The information contained herein does not purport to be comprehensive or final as the apparatus is subject to being altered and/or superceded. Recipients should not rely on this information. Any liabilities are hereby expressly disclaimed.

e. The information contained herein has been provided by the NTA but does not purport to be comprehensive or final. Recipients should not rely on the information. Neither the NTA nor any of its directors, officers, employees, agents, stakeholders or advisers make any representation or warranty as to, or accept any liability or responsibility in relation to, the adequacy, accuracy, reasonableness or completeness of the information provided as part of this document or any matter on which the information is based (including but not limited to loss or damage arising as a result of reliance by recipients on the information or any part of it). Any liabilities are hereby expressly disclaimed.



Rev	Date	Drn	Chk'd	App'd	Description
M01	FEB 2023	DS	LS	SMG	ISSUED FOR PHASE 4: PLANNING

**Client**  
NTA  
Udarás Náisiúnta Iompair  
National Transport Authority

**Engineering Designer**  
I-ROD  
TYPSA

Date: FEB 2023  
Scale: 1:500 @ A1, 1:1000 @ A3  
Programme Code: BCIDD  
Originator Code: ROT

Drawn: DS  
Checked: EE  
Approved: SMG

QMS Code

**Programme Title**  
BUSCONNECTS DUBLIN  
CORE BUS CORRIDORS INFRASTRUCTURE WORKS

**Drawing Title**  
KIMMAGE TO CITY CENTRE CORE BUS CORRIDOR SCHEME  
IW FOUL SEWER ASSET ALTERATIONS

Drawing File Name: BCIDD-ROT-UTL\_UD-0011\_XX\_00-DR-CU-0011  
Sheet Number: 11 of 14  
Status: A  
Rev: M01

DO NOT SCALE USE FIGURED DIMENSIONS ONLY

\\nodub\p1\j2019\1917119117-02\_WIP\08 MODELS\01 CAD\01 DWG\03 STG 3 - STATUTORY PROCESS (M)\01 PLANNING\11 KIMMAGE\BCIDD-ROT-FUTL\_UD-0011\_XX\_00-DR-CU-0001.dwg



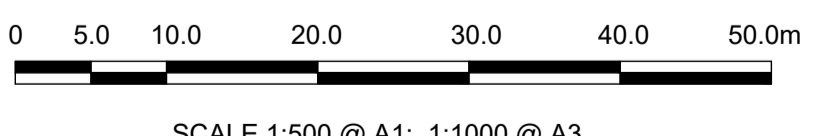


**LEGEND:**

	EXISTING KERB LINE		PROPOSED KERB LINE
	EXISTING FOUL WATER DRAINAGE		FOUL WATER DRAINAGE - PROPOSED DIVERSION
	EXISTING COMBINED DRAINAGE NETWORK		COMBINED DRAINAGE NETWORK - PROPOSED DIVERSION
	EXISTING NETWORK TO BE DECOMMISSIONED		SITE BOUNDARY LINE
			TEMPORARY LAND ACQUISITION

**NOTES:**

- UTILITY LOCATIONS ARE INDICATIVE ONLY AND BASED ON UTILITY PROVIDER RECORDS



**Disclaimer**  
 a. © National Transport Authority (NTA) 2022. This drawing is confidential and the copyright in it is owned by NTA. This drawing must not be either loaned, copied or otherwise reproduced in whole or in part or used for any purpose without the prior permission of NTA.  
 b. This drawing is to be used for the design element identified in the title block. Other information shown is to be considered indicative only. The drawing is to be read in conjunction with all other relevant design drawings.  
 c. O.S. data used for plans are printed under © Ordnance Survey Ireland Government of Ireland. All rights reserved. Licence Number 2022/OSI\_NMA\_180 National Transport Authority. All elevations are in metres and relate to OSI Geoid Model (OSGM15) Mean Head. All Co-ordinates are in Irish Transverse Mercator Grid (ITM) as defined by OSI active local GPS station.  
 d. Information concerning the position of apparatus shown on this drawing is based on drawings supplied by the utility owners and/or the utility works contractor, whilst every care has been taken as appropriate and are intended for general guidance only and no representation is made by the NTA as to the accuracy, completeness, sufficiency or otherwise of this drawing and the position of the apparatus. The information contained herein does not purport to be comprehensive or final as the apparatus is subject to being altered and/or superceded. Recipients should not rely on this information. Any liabilities are hereby expressly disclaimed.

The information contained herein has been provided by the NTA but does not purport to be comprehensive or final. Recipients should not rely on the information. Neither the NTA nor any of its directors, officers, employees, agents, stakeholders or advisers make any representation or warranty as to, or accept any liability or responsibility in relation to, the adequacy, accuracy, reasonableness or completeness of the information provided as part of this document or any matter on which the information is based (including but not limited to loss or damage arising as a result of reliance by recipients on the information or any part of it). Any liabilities are hereby expressly disclaimed.



Rev	Date	Drm	Chk'd	App'd	Description
M01	FEB 2023	DS	LS	SMG	ISSUED FOR PHASE 4: PLANNING

Client <b>NTA</b> Udarás Náisiúnta Iompair National Transport Authority		Engineering Designer <b>CIROD</b> TYPSA		
Date FEB 2023	Scale 1:500 @ A1 1:1000 @ A3	Drawn DS	Checked EE	Approved SMG
Programme Code BCIDD	Originator Code ROT	QMS Code		

Programme Title <b>BUSCONNECTS DUBLIN CORE BUS CORRIDORS INFRASTRUCTURE WORKS</b>				
Drawing Title KIMMAGE TO CITY CENTRE CORE BUS CORRIDOR SCHEME IW FOUL SEWER ASSET ALTERATIONS				
Drawing File Name BCIDD-ROT-UTL_UD-0011_XX_00-DR-CU-0012	Sheet Number 12 of 14	Status A	Rev M01	

DO NOT SCALE USE FIGURED DIMENSIONS ONLY

\\produbp1\U201919\1719117-02\_WIP\08 MODELS\01 CAD\01 PLANNING\11 KIMMAGE\BCIDD-ROT-UTL\_UD-0011\_XX\_00-DR-CU-0001.dwg



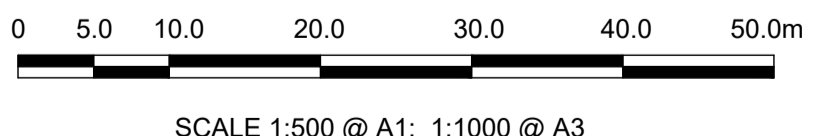


**LEGEND:**

	EXISTING KERB LINE		PROPOSED KERB LINE
	EXISTING FOUL WATER DRAINAGE		FOUL WATER DRAINAGE - PROPOSED DIVERSION
	EXISTING COMBINED DRAINAGE NETWORK		COMBINED DRAINAGE NETWORK - PROPOSED DIVERSION
	EXISTING NETWORK TO BE DECOMMISSIONED		SITE BOUNDARY LINE
			TEMPORARY LAND ACQUISITION

**NOTES:**

- UTILITY LOCATIONS ARE INDICATIVE ONLY AND BASED ON UTILITY PROVIDER RECORDS



**Disclaimer**

a. © National Transport Authority (NTA) 2022. This drawing is confidential and the copyright in it is owned by NTA. This drawing must not be either loaned, copied or otherwise reproduced in whole or in part or used for any purpose without the prior permission of NTA.

b. This drawing is to be used for the design element identified in the titleblock. Other information shown is to be considered indicative only. The drawing is to be read in conjunction with all other relevant design drawings.

c. O.S. data used for plans are printed under © Ordnance Survey Ireland Government of Ireland. All rights reserved. Licence Number 2022/OSI\_NMA\_180 National Transport Authority. All elevations are in metres and relate to OSI Geoid Model (OSGM15) Mean Head. All Co-ordinates are in Irish Transverse Mercator Grid (ITM) as defined by OSI active local GPS station.

d. Information concerning the position of apparatus shown on this drawing is based on drawings supplied by the utility owners and/or the utility works contractor, whilst every care has been taken in the preparation of this drawing, positions should be taken as approximate and are intended for general guidance only and no representation is made by the NTA as to the accuracy, completeness, sufficiency or otherwise of this drawing and the position of the apparatus. The information contained herein does not purport to be comprehensive or final as the apparatus is subject to being altered and/or superceded. Recipients should not rely on this information. Any liabilities are hereby expressly disclaimed.

e. The information contained herein has been provided by the NTA but does not purport to be comprehensive or final. Recipients should not rely on the information. Neither the NTA nor any of its directors, officers, employees, agents, stakeholders or advisers make any representation or warranty as to, or accept any liability or responsibility in relation to, the adequacy, accuracy, reasonableness or completeness of the information provided as part of this document or any matter on which the information is based (including but not limited to loss or damage arising as a result of reliance by recipients on the information or any part of it). Any liabilities are hereby expressly disclaimed.



Rev	Date	Drm	Chk'd	App'd	Description
M01	FEB 2023	DS	LS	SMG	ISSUED FOR PHASE 4: PLANNING

Client

Engineering Designer

Programme Title  
**BUSCONNECTS DUBLIN  
CORE BUS CORRIDORS INFRASTRUCTURE WORKS**

Drawing Title  
KIMMAGE TO CITY CENTRE CORE BUS CORRIDOR SCHEME  
IW FOUL SEWER ASSET ALTERATIONS

Date	Scale	Drawn	Checked	Approved
FEB 2023	1:500 @ A1 1:1000 @ A3	DS	EE	SMG
Programme Code	Originator Code	QMS Code		
BCIDD	ROT			

Drawing File Name	Sheet Number	Status	Rev
BCIDD-ROT-UTL_UD-0011_XX_00-DR-CU-0013	13 of 14	A	M01

DO NOT SCALE USE FIGURED DIMENSIONS ONLY

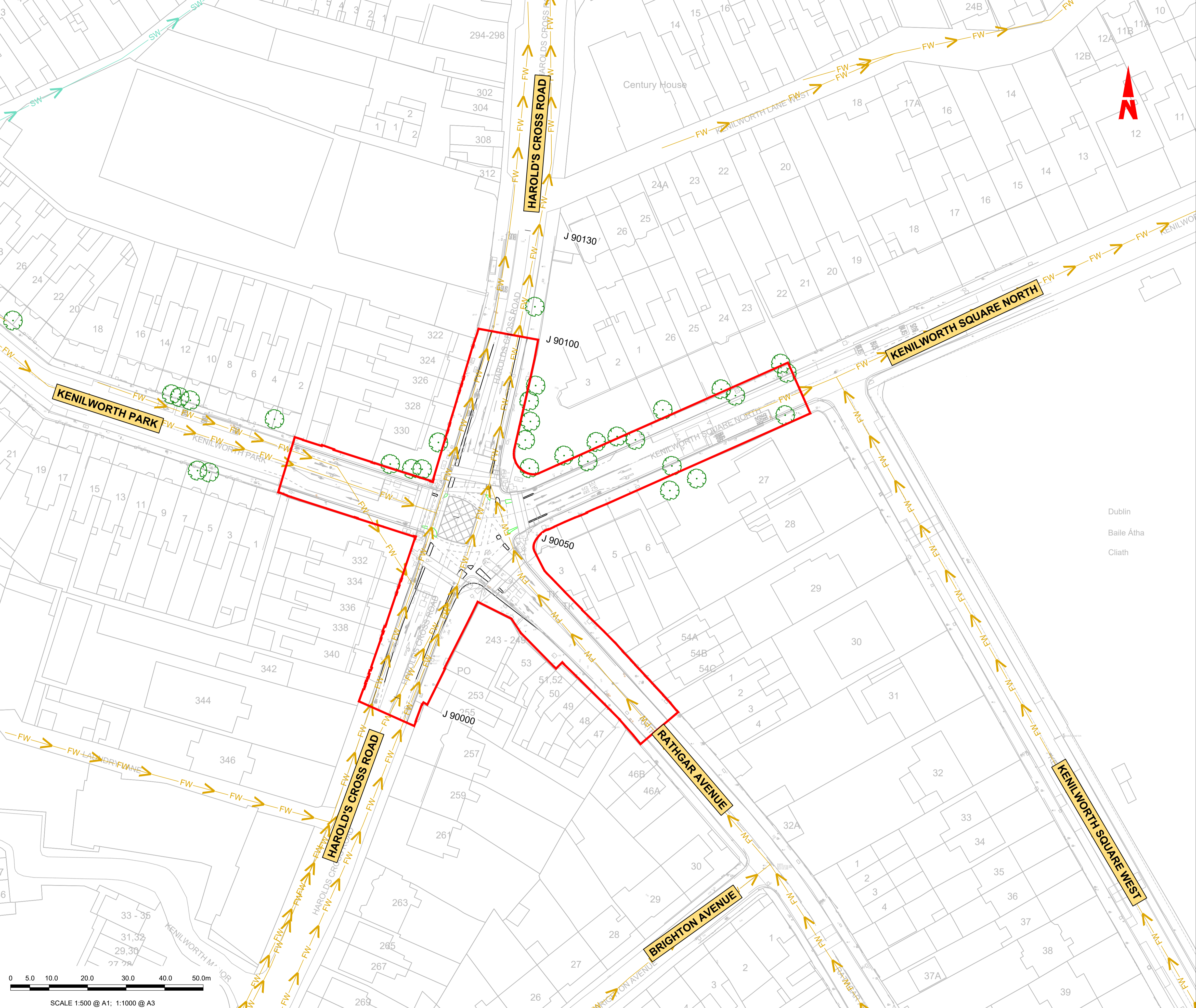
\\wddubp1\j\2019\1917\1917-02\_WIP\08 MODELS\01 CAD\01 PLANNING\11 KIMMAGE\BCIDD-ROT-UTL\_UD-0011\_XX\_00-DR-CU-0001.dwg



**LEGEND:**

- ADDITIONAL CATCHMENT AREA (EXISTING GRASSED AREA TO BE PAVED)
- EXISTING PAVED AREAS TO BECOME GRASSED
- EXISTING GRASSED AREAS TO BE MAINTAINED
- EXISTING FOUL NETWORK
- EXISTING COMBINED DRAINAGE NETWORK
- EXISTING SURFACE WATER NETWORK
- EXISTING OVERFLOW PIPE
- SURFACE WATER PIPE - UNDER CONSTRUCTION
- PROPOSED STORM WATER PIPE
- PROPOSED OVERSIZED PIPE
- PROPOSED FILTER DRAIN/PERFORATED PIPE
- PROPOSED PERMEABLE PAVING
- PROPOSED RODDING EYE
- PROPOSED MANHOLE
- PROPOSED INSPECTION CHAMBER
- EXISTING TREE
- EXISTING TREE TO BE REMOVED
- PROPOSED NEW TREE
- PROPOSED NEW TREE PIT
- PROPOSED SUDS I.E. SWALES, RAINGARDENS, FILTER DRAIN
- EXISTING GULLY
- SITE BOUNDARY LINE
- TEMPORARY LAND ACQUISITION

NOTE: PIPE SHAPE CODES DN = CIRCULAR, RG = RECTANGULAR, EG = EGG SHAPED, AH= ARCH.



**NOTES:**

- THIS DRAWING IS ONLY TO BE USED FOR THE DESIGN ELEMENT(S) IDENTIFIED IN THE TITLE BOX. ALL OTHER INFORMATION SHOWN ON THE DRAWING IS TO BE CONSIDERED INDICATIVE ONLY.
- THIS DRAWING IS TO BE READ IN CONJUNCTION WITH ALL OTHER DRAWINGS AND SPECIFICATIONS.
- STORMWATER DRAINAGE TO BE CONSTRUCTED IN ACCORDANCE WITH THE GREATER DUBLIN REGIONAL CODE OF PRACTICE FOR DRAINAGE WORKS AND/OR THE DRAINAGE DESIGN BASIS REPORT FOR CBC BUSCONNECTS.
- ALL LEVELS ARE IN METRES ABOVE ORDNANCE DATUM (MALIN HEAD DATUM). SURVEY GRID AND ALL COORDINATES ARE IN IRISH TRANSVERSE MERCATOR.
- EXISTING DRAINAGE NETWORK BASED ON RECORDS FROM IRISH WATER. PHYSICAL DRAINAGE INVESTIGATIONS MIGHT BE REQUIRED AT DETAILED DESIGN STAGE TO CONFIRM DETAILS OF EXISTING DRAINAGE ALONG THE ROUTE, THE SIZE, NUMBER, DEPTH, AND LOCATION ETC. OF EACH DRAINAGE INFRASTRUCTURE ELEMENT PRESENT ALONG THE ROUTE.
- EXISTING MANHOLE COVERS TO BE ADJUSTED TO MATCH FINISHED SURFACE.
- ALL THE EXISTING GULLIES THAT ARE NOT ADJACENT TO THE PROPOSED KERBLINE WILL BE DEMOLISHED, REPLACED BY SPLIT GULLIES AND RELOCATED AT THE PROPOSED ROAD KERBLINE.
- ALL THE EXISTING GULLY CONNECTIONS TO BE MAINTAINED WHERE POSSIBLE.
- NEW SPLIT GULLIES AND CONNECTIONS WILL BE REQUIRED. NO. OF AND SPACING TO BE DETERMINED DURING DETAILED DESIGN.
- 2NO. OF GULLIES TO BE PROVIDED AT LOW POINTS AND AT LEAST ONE GULLY TO BE PROVIDED IMMEDIATELY UPSTREAM OF PEDESTRIAN CROSSINGS.
- ALL SUDS FEATURES WILL PROVIDE ATTENUATION AND SURFACE WATER QUALITY TREATMENT
- 'NET IMPERMEABLE AREA TO BE ATTENUATED' HAS PERMEABILITY FACTORS APPLIED.

**ABBREVIATIONS:**

ADR: ALLOWABLE DISCHARGE RATE  
Vol<sub>att</sub>: VOLUME OF ATTENUATION

**Disclaimer:**

a. © National Transport Authority (NTA) 2022. This drawing is confidential and the copyright in it is owned by NTA. This drawing must not be either loaned, copied or otherwise reproduced in whole or in part or used for any purpose without the prior permission of NTA.

b. This drawing is to be used for the design element identified in the title box. Other information shown is to be considered indicative only. The drawing is to be read in conjunction with all other relevant design drawings.

c. O.S. data used for plans are printed under © Ordnance Survey Ireland Government of Ireland. All rights reserved. Licence Number 2022/OSI\_NMA\_180 National Transport Authority. All elevations are in metres and relate to OSI Geoid Model (OSGM15) Malin Head. All Co-ordinates are in Irish Transverse Mercator Grid (ITM) as defined by OSI active local GPS station.

d. Information concerning the position of apparatus shown on this drawing is based on drawings supplied by the utility owners and/or the utility works contractor, whilst every care has been taken in the preparation of this drawing, positions should be taken as approximate and are intended for general guidance only and no representation is made by the NTA as to the accuracy, completeness, sufficiency or otherwise of this drawing and the information is based (including but not limited to loss or damage arising as a result of reliance by recipients on the information or any part of it). Any liabilities are hereby expressly disclaimed.

Project Ireland 2040  
Building Ireland's Future

Rev	Date	Drn	Chk'd	App'd	Description
M01	FEB 2023	DS	LS	SMG	ISSUED FOR PHASE 4: PLANNING

Client: **NTA**  
Udarás Náisiúnta Iompair  
National Transport Authority

Engineering Designer: **CIROD**  
TYPSA

Date: FEB 2023  
Scale: 1:500 @ A1, 1:1000 @ A3

Programme Code: BCIDD  
Originator Code: ROT

Drawn: DS  
Checked: LS  
Approved: SMG

Programme Title: **BUSCONNECTS DUBLIN**  
**CORE BUS CORRIDORS INFRASTRUCTURE WORKS**

Drawing Title: **KIMMAGE TO CITY CENTRE CORE BUS CORRIDOR SCHEME**  
**PROPOSED SURFACE WATER DRAINAGE WORKS**

Drawing File Name: BCIDD-ROT-DNG\_RD-0011\_XX\_00-DR-CD-0014  
Sheet Number: 14 of 14  
Status: A  
Rev: M01

DO NOT SCALE USE FIGURED DIMENSIONS ONLY

\\odubp1u2019191717117-02\_WIP08 MODELS01 CAD01 DWG003 STG 3 - STATUTORY PROCESS (M)01 PLANNING11 KIMMAGEBCIDD-ROT-DNG\_RD-0011\_XX\_00-DR-CD-0011.dwg

Dublin  
Baile Átha  
Cliath